

Product Reference Guide

EFFECTIVE DATE APRIL 2010



In 2002, we completed our manufacturing plant in Leiden, The Netherlands. At 6,000 square meters, it is the largest of its kind in the world. This plant contains the only automated breast implant dipping machine in the world, which produces every implant shell in a precisely uniform manner. To meet an ever-increasing demand for our products, this state-of-the-art facility produces more than 300,000 breast implants a year, distributed to more than 100 nations. It is important to note that Mentor conducts all production and product testing either in the US or EU.



Founded in 1969, Mentor is a leading supplier of medical products in more than 100 countries throughout the world. As the world's leading maker of high-quality breast implants for over 30 years, our experience results in quality products that you can rely on.

Mentor conducts research, development and manufacturing at a number of facilities in Europe and the United States. Mentor employs about 1,200 people around the world. In 1995, Mentor became the first breast implant manufacturer to achieve CE-marking for its products.

Mentor has worked closely with surgeons throughout the world to develop innovative products such as Spectra® postoperatively adjustable implants; Becker tissue expander/mammary implants; and our Contour Profile® mammary implants.

Mentor's manufacturing capability is exceptional. We have substantial experience in biomaterials and biopolymers manufacturing. At the same time, our regulatory expertise has enabled the Company to bring products to market in the world's most stringently regulated health care environments.

Mentor is a manufacturer with a strong customer focus. Our sales representatives are skilled in technical product issues, enabling them to act as a valuable information resource. For questions or additional information, please contact your local Mentor branch (listed on the back cover) or distributor.

For the newest product and service innovations, look to the company advancing aesthetics — Mentor.

MemoryGel® Breast Implants, A More Evolved Implant.	1
About MemoryGel® Breast Implants	
MemoryGel® Breast Implants Product Scale	
All Cohesive, All the Time™	2
Silicone Gel Breast Implants, Cohesive I™	3
Siltex™ Round Moderate Profile, Cohesive I™	
Siltex™ Round Moderate <i>Plus</i> Profile, Cohesive I™	
Siltex™ Round High Profile, Cohesive I™	
Siltex™ Round Ultra High Profile, Cohesive I™	
Smooth Round Low Profile, Cohesive I™	
Smooth Round Moderate Profile, Cohesive I™	
Smooth Round Moderate <i>Plus</i> Profile, Cohesive I™	
Smooth Round High Profile, Cohesive I™	
Smooth Round Ultra High Profile, Cohesive I™	
Silicone Gel Breast Implants, Cohesive II™	7
Siltex™ Round Moderate Profile, Cohesive II™	
Siltex™ Round Moderate <i>Plus</i> Profile, Cohesive II™	
Siltex™ Round High Profile, Cohesive II™	
Silicone Gel Breast Implants, Cohesive III™	9
CPG™ 331, Cohesive III™, Tall Height, Moderate Projection	
CPG™ 321, Cohesive III™, Medium Height, Moderate Projection	
CPG™ 311, Cohesive III™, Low Height, Moderate Projection	
CPG™ 332, Cohesive III™, Tall Height, Moderate <i>Plus</i> Projection	
CPG™ 322, Cohesive III™, Medium Height, Moderate <i>Plus</i> Projection	
CPG™ 312, Cohesive III™, Low Height, Moderate <i>Plus</i> Projection	
CPG™ 333, Cohesive III™, Tall Height, High Projection	
CPG™ 323, Cohesive III™, Medium Height, High Projection	
CPG™ 313, Cohesive III™, Low Height, High Projection	
Becker Expander Breast Implants	13
Siltex™ Round Becker 25, Cohesive I™	
Siltex™ Round Becker 50, Cohesive I™	
Siltex™ Contour Profile® Becker 35, Cohesive II™	
Spectra® Adjustable Gel Breast Implants	14
Siltex™ Round Spectra® Adjustable Gel, Cohesive I™	
Smooth Round Spectra® Adjustable Gel, Cohesive I™	
Sterile Resterilizable Gel Sizers.	15
Round Low Profile	
Round Moderate Profile	
Round Moderate <i>Plus</i> Profile	
Round High Profile	
Round Ultra High Profile	
CPG™ 331, Cohesive III™, Tall Height, Moderate Projection	
CPG™ 321, Cohesive III™, Medium Height, Moderate Projection	
CPG™ 311, Cohesive III™, Low Height, Moderate Projection	
CPG™ 332, Cohesive III™, Tall Height, Moderate <i>Plus</i> Projection	
CPG™ 322, Cohesive III™, Medium Height, Moderate <i>Plus</i> Projection	
CPG™ 312, Cohesive III™, Low Height, Moderate <i>Plus</i> Projection	
CPG™ 333, Cohesive III™, Tall Height, High Projection	
CPG™ 323, Cohesive III™, Medium Height, High Projection	
CPG™ 313, Cohesive III™, Low Height, High Projection	

Saline Breast Implants – Round	21
Siltex™ Round Moderate Profile	
Smooth Round Moderate Profile	
Smooth Round Moderate <i>Plus</i> Profile	
Smooth Round High Profile	
Saline Breast Implants – Contoured	23
Siltex™ Contour Profile® Moderate	
Siltex™ Contour Profile® High	
Spectrum® Adjustable Saline Breast Implants	24
Siltex™ Round Spectrum®	
Siltex™ Contour Profile® Spectrum®	
Smooth Round Spectrum®	
Sterile Saline Sizers	25
Round Moderate Profile	
Round Moderate <i>Plus</i> Profile	
Round High Profile	
Contour Profile® High	
Contour Profile® Breast Tissue Expanders	27
Siltex™ Low Height, Style 6100	
Siltex™ Medium Height, Style 6200	
Siltex™ Tall Height, Style 6300	
Other Tissue Expanders	28
Smooth Round	
Smooth Elliptical	
Smooth Crescent	
Smooth Rectangle	
Accessories	29
Aseptic Transfer System	
Injection Port Detector	
Injection Dome	
Byron Body Aesthetics	30
Aspiration Products	
Cannula Products	
Cannula Accessories	
Infiltration Systems	
Microinjection	
Disposables	
Miscellaneous Products	
Caromed® Compression Garments	41
Important Safety Information	45



A More Evolved Implant

- Highly compliant shell for ease of placement
- Strict US and EU manufacturing standards
- Lifetime product replacement policy
- Low, Moderate, Moderate *Plus*, High, and Ultra High projections
- Proprietary silicone gel formula for a natural give that resembles breast tissue

About MemoryGel® Breast Implants

Mentor’s advanced MemoryGel® breast implants feature a proprietary cohesive silicone gel formulation used to fill all of Mentor’s silicone gel-filled breast implants around the world. By varying the components of the gel, Mentor is able to produce a wide selection of products ranging from a very soft to a very firm consistency.

MemoryGel® Breast Implants Product Scale

Product Profile	Cohesive I™	Cohesive II™	Cohesive III™
Round Low	X		
Round Moderate	X	X	
Round Moderate <i>Plus</i>	X	X	
Round High	X	X	
Round Ultra High	X		
Contour Profile® Family			X
Round Becker 25	X		
Round Becker 50	X		
Contour Profile® Becker 35		X	
Round Spectra® Adjustable	X		

All Cohesive, All the Time™.



Advanced MemoryGel® Breast Implants.
The more evolved implant.

All of Mentor's gel implants use gel that is cohesive, safe and aesthetically pleasing.

Cohesive I™

The standard cohesive level gel used in Mentor's implants. This is Mentor's softest gel and has been preferred for years in textured and smooth Round Low, Moderate, Moderate *Plus*, High, and Ultra High Profile gel breast implants as well as the Round Spectra™ and Becker implants.

Cohesive II™

A slightly firmer gel, for surgeons wanting a firmer feeling implant. This gel is used in textured Round Moderate, Moderate *Plus*, High Profile Gel Breast Implants and Contour Profile® Becker implants.

Cohesive III™

Mentor's most cohesive gel, providing shape retention with a pleasing level of firmness for optimal aesthetic results. This gel is used in Mentor's Contour Profile® Gel Family.

Silicone Gel Breast Implants, Cohesive I™

Siltex™ Round Moderate Profile, Cohesive I™



Volume	Diameter	Projection	Catalog #	Resterilizable Gel Sizer*
100 cc	8,8 cm	2,5 cm	354-1007	RSZ-7100
125 cc	9,3 cm	2,8 cm	354-1257	RSZ-7125
150 cc	10,2 cm	2,7 cm	354-1507	RSZ-7150
175 cc	10,7 cm	2,8 cm	354-1757	RSZ-7175
200 cc	11,2 cm	2,8 cm	354-2007	RSZ-7200
225 cc	11,4 cm	3,0 cm	354-2257	RSZ-7225
250 cc	11,5 cm	3,3 cm	354-2507	RSZ-7250
275 cc	12,4 cm	3,4 cm	354-2757	RSZ-7275
300 cc	12,6 cm	3,5 cm	354-3007	RSZ-7300
325 cc	12,9 cm	3,6 cm	354-3257	RSZ-7325
350 cc	13,4 cm	3,7 cm	354-3507	RSZ-7350
375 cc	13,4 cm	3,8 cm	354-3757	RSZ-7375
400 cc	13,5 cm	3,9 cm	354-4007	RSZ-7400
450 cc	13,9 cm	4,1 cm	354-4507	RSZ-7450
500 cc	14,2 cm	4,3 cm	354-5007	RSZ-7500
550 cc	14,8 cm	4,4 cm	354-5507	RSZ-7550
600 cc	15,4 cm	4,5 cm	354-6007	RSZ-7600
700 cc	16,8 cm	4,3 cm	354-7007	RSZ-7700
800 cc	17,2 cm	4,6 cm	354-8007	RSZ-7800

Siltex™ Round Moderate *Plus* Profile, Cohesive I™



Volume	Diameter	Projection	Catalog #	Resterilizable Gel Sizer*
100 cc	8,1 cm	2,7 cm	354-1001	RSZ-1001
125 cc	8,8 cm	2,9 cm	354-1251	RSZ-1251
150 cc	9,4 cm	3,0 cm	354-1501	RSZ-1501
175 cc	10,0 cm	3,2 cm	354-1751	RSZ-1751
200 cc	10,5 cm	3,3 cm	354-2001	RSZ-2001
225 cc	10,9 cm	3,5 cm	354-2251	RSZ-2251
250 cc	11,3 cm	3,6 cm	354-2501	RSZ-2501
275 cc	11,7 cm	3,7 cm	354-2751	RSZ-2751
300 cc	12,0 cm	3,7 cm	354-3001	RSZ-3001
325 cc	12,3 cm	3,8 cm	354-3251	RSZ-3251
350 cc	12,6 cm	3,8 cm	354-3501	RSZ-3501
375 cc	12,9 cm	3,9 cm	354-3751	RSZ-3751
400 cc	13,2 cm	4,0 cm	354-4001	RSZ-4001
450 cc	13,7 cm	4,1 cm	354-4501	RSZ-4501
500 cc	14,1 cm	4,2 cm	354-5001	RSZ-5001
550 cc	14,4 cm	4,4 cm	354-5501	RSZ-5501
600 cc	14,7 cm	4,5 cm	354-6001	RSZ-6001
700 cc	15,7 cm	4,8 cm	354-7001	RSZ-7001
800 cc	16,6 cm	5,0 cm	354-8001	RSZ-8001

*Resterilizable up to 10 times.

Silicone Gel Breast Implants, Cohesive I™ CONT'D

Siltex™ Round High Profile, Cohesive I™



Volume	Diameter	Projection	Catalog #	Resterilizable Gel Sizer*
125 cc	8,4 cm	3,6 cm	354-4125	RSZ-1254
150 cc	8,9 cm	3,8 cm	354-4150	RSZ-1504
175 cc	9,4 cm	4,0 cm	354-4175	RSZ-1754
200 cc	9,9 cm	4,1 cm	354-4200	RSZ-2004
225 cc	10,2 cm	4,3 cm	354-4225	RSZ-2254
250 cc	10,5 cm	4,5 cm	354-4250	RSZ-2504
275 cc	10,9 cm	4,6 cm	354-4275	RSZ-2754
300 cc	11,1 cm	4,7 cm	354-4300	RSZ-3004
325 cc	11,5 cm	4,8 cm	354-4325	RSZ-3254
350 cc	11,7 cm	4,9 cm	354-4350	RSZ-3504
375 cc	12,0 cm	5,0 cm	354-4375	RSZ-3754
400 cc	12,3 cm	5,1 cm	354-4400	RSZ-4004
425 cc	12,5 cm	5,2 cm	354-4425	RSZ-4254
450 cc	12,7 cm	5,2 cm	354-4450	RSZ-4504
500 cc	13,2 cm	5,4 cm	354-4500	RSZ-5004
550 cc	13,5 cm	5,6 cm	354-4550	RSZ-5504
600 cc	14,0 cm	5,7 cm	354-4600	RSZ-6004
650 cc	14,3 cm	5,8 cm	354-4650	RSZ-6504
700 cc	14,7 cm	6,0 cm	354-4700	RSZ-7004
800 cc	15,4 cm	6,3 cm	354-4800	RSZ-8004

Siltex™ Round Ultra High Profile, Cohesive I™



Volume	Diameter	Projection	Catalog #	Resterilizable Gel Sizer*
135 cc	8,0 cm	4,3 cm	354-5135	RSZ-5135
160 cc	8,4 cm	4,5 cm	354-5160	RSZ-5160
185 cc	8,6 cm	4,6 cm	354-5185	RSZ-5185
215 cc	8,9 cm	4,7 cm	354-5215	RSZ-5215
240 cc	9,2 cm	4,9 cm	354-5240	RSZ-5240
270 cc	9,5 cm	5,0 cm	354-5270	RSZ-5270
295 cc	9,9 cm	5,2 cm	354-5295	RSZ-5295
320 cc	10,0 cm	5,3 cm	354-5320	RSZ-5320
350 cc	10,3 cm	5,4 cm	354-5350	RSZ-5350
375 cc	10,5 cm	5,5 cm	354-5375	RSZ-5375
400 cc	10,8 cm	5,6 cm	354-5400	RSZ-5400
430 cc	11,1 cm	5,8 cm	354-5430	RSZ-5430
455 cc	11,3 cm	5,9 cm	354-5455	RSZ-5455
480 cc	11,6 cm	6,0 cm	354-5480	RSZ-5480
535 cc	12,1 cm	6,3 cm	354-5535	RSZ-5535
590 cc	12,6 cm	6,5 cm	354-5590	RSZ-5590

*Resterilizable up to 10 times.

Silicone Gel Breast Implants, Cohesive I™ CONT'D

Smooth Round Low Profile, Cohesive I™



Volume	Diameter	Projection	Catalog #	Resterilizable Gel Sizer*
100 cc	9,4 cm	1,9 cm	310JSP1100	RSZ-1100
125 cc	10,1 cm	2,0 cm	310JSP1125	RSZ-1125
150 cc	10,7 cm	2,2 cm	310JSP1150	RSZ-1150
175 cc	11,3 cm	2,3 cm	310JSP1175	RSZ-1175
200 cc	11,8 cm	2,4 cm	310JSP1200	RSZ-1200
225 cc	12,3 cm	2,5 cm	310JSP1225	RSZ-1225
250 cc	12,7 cm	2,6 cm	310JSP1250	RSZ-1250
275 cc	13,1 cm	2,7 cm	310JSP1275	RSZ-1275
300 cc	13,5 cm	2,7 cm	310JSP1300	RSZ-1300
325 cc	13,9 cm	2,8 cm	310JSP1325	RSZ-1325
350 cc	14,2 cm	2,9 cm	310JSP1350	RSZ-1350
375 cc	14,5 cm	2,9 cm	310JSP1375	RSZ-1375
400 cc	14,8 cm	3,0 cm	310JSP1400	RSZ-1400
450 cc	15,4 cm	3,1 cm	310JSP1450	RSZ-1450
500 cc	16,0 cm	3,3 cm	310JSP1500	RSZ-1500
550 cc	16,5 cm	3,4 cm	310JSP1550	RSZ-1550
600 cc	17,0 cm	3,5 cm	310JSP1600	RSZ-1600

Smooth Round Moderate Profile, Cohesive I™



Volume	Diameter	Projection	Catalog #	Resterilizable Gel Sizer*
100 cc	9,3 cm	2,1 cm	350-7100 BC	RSZ-7100
125 cc	10,0 cm	2,2 cm	350-7125 BC	RSZ-7125
150 cc	10,3 cm	2,3 cm	350-7150 BC	RSZ-7150
175 cc	11,2 cm	2,4 cm	350-7175 BC	RSZ-7175
200 cc	11,7 cm	2,5 cm	350-7200 BC	RSZ-7200
225 cc	12,2 cm	2,6 cm	350-7225 BC	RSZ-7225
250 cc	12,3 cm	2,8 cm	350-7250 BC	RSZ-7250
275 cc	13,2 cm	2,9 cm	350-7275 BC	RSZ-7275
300 cc	13,5 cm	3,0 cm	350-7300 BC	RSZ-7300
325 cc	13,9 cm	3,0 cm	350-7325 BC	RSZ-7325
350 cc	14,2 cm	3,1 cm	350-7350 BC	RSZ-7350
375 cc	14,4 cm	3,2 cm	350-7375 BC	RSZ-7375
400 cc	14,5 cm	3,2 cm	350-7400 BC	RSZ-7400
450 cc	14,9 cm	3,4 cm	350-7450 BC	RSZ-7450
500 cc	15,2 cm	3,6 cm	350-7500 BC	RSZ-7500
550 cc	15,9 cm	3,6 cm	350-7550 BC	RSZ-7550
600 cc	16,5 cm	3,7 cm	350-7600 BC	RSZ-7600
700 cc	17,4 cm	3,9 cm	350-7700 BC	RSZ-7700
800 cc	18,2 cm	4,1 cm	350-7800 BC	RSZ-7800

*Resterilizable up to 10 times.

Silicone Gel Breast Implants, Cohesive I™ CONT'D

Smooth Round Moderate *Plus* Profile, Cohesive I™



Volume	Diameter	Projection	Catalog #	Resterilizable Gel Sizer*
100 cc	8,2 cm	2,7 cm	350-1001 BC	RSZ-1001
125 cc	8,9 cm	2,8 cm	350-1251 BC	RSZ-1251
150 cc	9,5 cm	2,9 cm	350-1501 BC	RSZ-1501
175 cc	10,0 cm	3,1 cm	350-1751 BC	RSZ-1751
200 cc	10,5 cm	3,2 cm	350-2001 BC	RSZ-2001
225 cc	10,9 cm	3,3 cm	350-2251 BC	RSZ-2251
250 cc	11,3 cm	3,4 cm	350-2501 BC	RSZ-2501
275 cc	11,7 cm	3,5 cm	350-2751 BC	RSZ-2751
300 cc	12,0 cm	3,6 cm	350-3001 BC	RSZ-3001
325 cc	12,3 cm	3,8 cm	350-3251 BC	RSZ-3251
350 cc	12,5 cm	3,9 cm	350-3501 BC	RSZ-3501
375 cc	12,8 cm	4,0 cm	350-3751 BC	RSZ-3751
400 cc	13,1 cm	4,0 cm	350-4001 BC	RSZ-4001
450 cc	13,6 cm	4,2 cm	350-4501 BC	RSZ-4501
500 cc	14,1 cm	4,3 cm	350-5001 BC	RSZ-5001
550 cc	14,6 cm	4,5 cm	350-5501 BC	RSZ-5501
600 cc	15,0 cm	4,6 cm	350-6001 BC	RSZ-6001
700 cc	15,8 cm	4,9 cm	350-7001 BC	RSZ-7001
800 cc	16,5 cm	5,1 cm	350-8001 BC	RSZ-8001

Smooth Round High Profile, Cohesive I™



Volume	Diameter	Projection	Catalog #	Resterilizable Gel Sizer*
125 cc	8,3 cm	3,5 cm	350-1254 BC	RSZ-1254
150 cc	8,8 cm	3,7 cm	350-1504 BC	RSZ-1504
175 cc	9,3 cm	3,9 cm	350-1754 BC	RSZ-1754
200 cc	9,7 cm	4,0 cm	350-2004 BC	RSZ-2004
225 cc	10,1 cm	4,2 cm	350-2254 BC	RSZ-2254
250 cc	10,5 cm	4,3 cm	350-2504 BC	RSZ-2504
275 cc	10,8 cm	4,4 cm	350-2754 BC	RSZ-2754
300 cc	11,1 cm	4,5 cm	350-3004 BC	RSZ-3004
325 cc	11,4 cm	4,6 cm	350-3254 BC	RSZ-3254
350 cc	11,7 cm	4,8 cm	350-3504 BC	RSZ-3504
375 cc	12,0 cm	4,8 cm	350-3754 BC	RSZ-3754
400 cc	12,2 cm	5,0 cm	350-4004 BC	RSZ-4004
425 cc	12,5 cm	5,0 cm	350-4254 BC	RSZ-4254
450 cc	12,8 cm	5,1 cm	350-4504 BC	RSZ-4504
500 cc	13,2 cm	5,3 cm	350-5004 BC	RSZ-5004
550 cc	13,6 cm	5,5 cm	350-5504 BC	RSZ-5504
600 cc	14,0 cm	5,6 cm	350-6004 BC	RSZ-6004
650 cc	14,4 cm	5,7 cm	350-6504 BC	RSZ-6504
700 cc	14,8 cm	5,8 cm	350-7004 BC	RSZ-7004
800 cc	15,5 cm	6,0 cm	350-8004 BC	RSZ-8004

*Resterilizable up to 10 times.

Silicone Gel Breast Implants, Cohesive I™ CONT'D

Smooth Round Ultra High Profile,
Cohesive I™



Volume	Diameter	Projection	Catalog #	Resterilizable Gel Sizer*
135 cc	7,8 cm	4,1 cm	350-5135 BC	RSZ-5135
160 cc	8,2 cm	4,3 cm	350-5160 BC	RSZ-5160
185 cc	8,4 cm	4,4 cm	350-5185 BC	RSZ-5185
215 cc	8,7 cm	4,5 cm	350-5215 BC	RSZ-5215
240 cc	9,0 cm	4,7 cm	350-5240 BC	RSZ-5240
270 cc	9,3 cm	4,8 cm	350-5270 BC	RSZ-5270
295 cc	9,7 cm	5,0 cm	350-5295 BC	RSZ-5295
320 cc	9,8 cm	5,1 cm	350-5320 BC	RSZ-5320
350 cc	10,1 cm	5,2 cm	350-5350 BC	RSZ-5350
375 cc	10,4 cm	5,3 cm	350-5375 BC	RSZ-5375
400 cc	10,6 cm	5,4 cm	350-5400 BC	RSZ-5400
430 cc	10,9 cm	5,6 cm	350-5430 BC	RSZ-5430
455 cc	11,2 cm	5,7 cm	350-5455 BC	RSZ-5455
480 cc	11,4 cm	5,8 cm	350-5480 BC	RSZ-5480
535 cc	12,0 cm	6,1 cm	350-5535 BC	RSZ-5535
590 cc	12,5 cm	6,3 cm	350-5590 BC	RSZ-5590

Silicone Gel Breast Implants, Cohesive II™

Siltex™ Round Moderate Profile,
Cohesive II™



Volume	Diameter	Projection	Catalog #	Resterilizable Gel Sizer*
100 cc	9,1 cm	2,6 cm	354-1009	RSZ-7100
125 cc	9,3 cm	2,8 cm	354-1259	RSZ-7125
150 cc	10,1 cm	2,4 cm	354-1509	RSZ-7150
175 cc	10,5 cm	2,9 cm	354-1759	RSZ-7175
200 cc	11,2 cm	2,8 cm	354-2009	RSZ-7200
225 cc	11,5 cm	3,0 cm	354-2259	RSZ-7225
250 cc	11,6 cm	3,5 cm	354-2509	RSZ-7250
275 cc	12,6 cm	3,1 cm	354-2759	RSZ-7275
300 cc	12,6 cm	3,6 cm	354-3009	RSZ-7300
325 cc	13,1 cm	3,6 cm	354-3259	RSZ-7325
350 cc	13,4 cm	3,5 cm	354-3509	RSZ-7350
375 cc	13,4 cm	3,9 cm	354-3759	RSZ-7375
400 cc	13,7 cm	3,8 cm	354-4009	RSZ-7400
450 cc	13,7 cm	4,6 cm	354-4509	RSZ-7450
500 cc	14,2 cm	4,8 cm	354-5009	RSZ-7500
550 cc	14,5 cm	4,5 cm	354-5509	RSZ-7550
600 cc	15,3 cm	4,6 cm	354-6009	RSZ-7600
700 cc	16,3 cm	5,0 cm	354-7009	RSZ-7700
800 cc	16,7 cm	5,4 cm	354-8009	RSZ-7800

*Resterilizable up to 10 times.

Silicone Gel Breast Implants, Cohesive II™ CONT'D

Siltex™ Round Moderate *Plus* Profile, Cohesive II™



Volume	Diameter	Projection	Catalog #	Resterilizable Gel Sizer*
100 cc	8,1 cm	2,7 cm	324-5100	RSZ-1001
125 cc	8,8 cm	2,9 cm	324-5125	RSZ-1251
150 cc	9,4 cm	3,0 cm	324-5150	RSZ-1501
175 cc	10,0 cm	3,2 cm	324-5175	RSZ-1751
200 cc	10,5 cm	3,3 cm	324-5200	RSZ-2001
225 cc	10,9 cm	3,5 cm	324-5225	RSZ-2251
250 cc	11,3 cm	3,6 cm	324-5250	RSZ-2501
275 cc	11,7 cm	3,7 cm	324-5275	RSZ-2751
300 cc	12,0 cm	3,7 cm	324-5300	RSZ-3001
325 cc	12,3 cm	3,8 cm	324-5325	RSZ-3251
350 cc	12,6 cm	3,8 cm	324-5350	RSZ-3501
375 cc	12,9 cm	3,9 cm	324-5375	RSZ-3751
400 cc	13,2 cm	4,0 cm	324-5400	RSZ-4001
450 cc	13,7 cm	4,1 cm	324-5450	RSZ-4501
500 cc	14,1 cm	4,2 cm	324-5500	RSZ-5001
550 cc	14,4 cm	4,4 cm	324-5550	RSZ-5501
600 cc	14,7 cm	4,5 cm	324-5600	RSZ-6001
700 cc	15,7 cm	4,8 cm	324-5700	RSZ-7001
800 cc	16,6 cm	5,0 cm	324-5800	RSZ-8001

Siltex™ Round High Profile, Cohesive II™



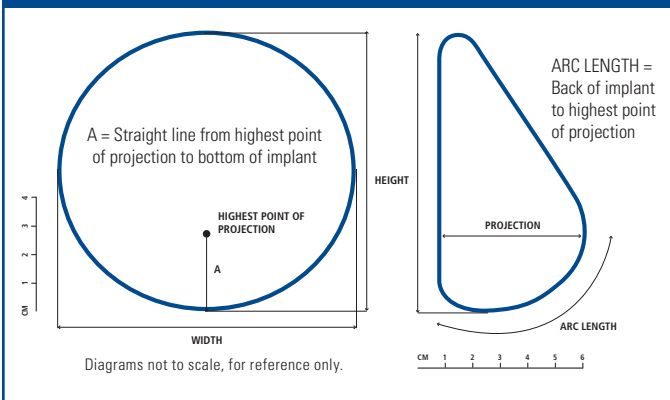
Volume	Diameter	Projection	Catalog #	Resterilizable Gel Sizer*
125 cc	8,4 cm	3,6 cm	324-4125	RSZ-1254
150 cc	8,9 cm	3,8 cm	324-4150	RSZ-1504
175 cc	9,4 cm	4,0 cm	324-4175	RSZ-1754
200 cc	9,9 cm	4,1 cm	324-4200	RSZ-2004
225 cc	10,2 cm	4,3 cm	324-4225	RSZ-2254
250 cc	10,5 cm	4,5 cm	324-4250	RSZ-2504
275 cc	10,9 cm	4,6 cm	324-4275	RSZ-2754
300 cc	11,1 cm	4,7 cm	324-4300	RSZ-3004
325 cc	11,5 cm	4,8 cm	324-4325	RSZ-3254
350 cc	11,7 cm	4,9 cm	324-4350	RSZ-3504
375 cc	12,0 cm	5,0 cm	324-4375	RSZ-3754
400 cc	12,3 cm	5,1 cm	324-4400	RSZ-4004
425 cc	12,5 cm	5,2 cm	324-4425	RSZ-4254
450 cc	12,7 cm	5,2 cm	324-4450	RSZ-4504
500 cc	13,2 cm	5,4 cm	324-4500	RSZ-5004
550 cc	13,5 cm	5,6 cm	324-4550	RSZ-5504
600 cc	14,0 cm	5,7 cm	324-4600	RSZ-6004
650 cc	14,3 cm	5,8 cm	324-4650	RSZ-6504
700 cc	14,7 cm	6,0 cm	324-4700	RSZ-7004
800 cc	15,4 cm	6,3 cm	324-4800	RSZ-8004

*Resterilizable up to 10 times.

Silicone Gel Breast Implants, Cohesive III™

CPG™ NAMING LEGEND		
Cohesive Level	Implant Height	Implant Projection
III 3	Tall 3	High 3
	Medium 2	Moderate <i>Plus</i> 2
	Low 1	Moderate 1
<p>KEY: Digit 1= Cohesive Level Digit 2= Height of Implant Digit 3= Projection of Implant</p>		

UNDERSTANDING THE "A" AND ARC LENGTH MEASUREMENTS



Silicone Gel Breast Implants, Cohesive III™ CONT'D

CPG™ 331†, Cohesive III™, Tall Height, Moderate Projection



Volume	Width	Height	Projection	A	Arc Length	Catalog #	Resterilizable Gel Sizer*
125 cc	9,0 cm	9,2 cm	3,2 cm	2,4 cm	3,9 cm	334-0903	RSZ-0903
150 cc	9,5 cm	9,7 cm	3,3 cm	2,6 cm	4,1 cm	334-0953	RSZ-0953
175 cc	10,0 cm	10,2 cm	3,4 cm	2,7 cm	4,3 cm	334-1003	RSZ-1003
200 cc	10,5 cm	10,7 cm	3,5 cm	2,8 cm	4,6 cm	334-1053	RSZ-1053
230 cc	11,0 cm	11,3 cm	3,6 cm	3,0 cm	4,8 cm	334-1103	RSZ-1103
265 cc	11,5 cm	11,8 cm	3,7 cm	3,1 cm	5,0 cm	334-1153	RSZ-1153
300 cc	12,0 cm	12,3 cm	3,9 cm	3,2 cm	5,2 cm	334-1203	RSZ-1203
340 cc	12,5 cm	12,8 cm	4,0 cm	3,4 cm	5,4 cm	334-1253	RSZ-1253
380 cc	13,0 cm	13,3 cm	4,1 cm	3,5 cm	5,6 cm	334-1303	RSZ-1303
425 cc	13,5 cm	13,8 cm	4,3 cm	3,6 cm	5,9 cm	334-1353	RSZ-1353
475 cc	14,0 cm	14,3 cm	4,5 cm	3,8 cm	6,1 cm	334-1403	RSZ-1403
530 cc	14,5 cm	14,8 cm	4,6 cm	3,9 cm	6,3 cm	334-1453	RSZ-1453
585 cc	15,0 cm	15,3 cm	4,8 cm	4,0 cm	6,5 cm	334-1503	RSZ-1503
645 cc	15,5 cm	15,9 cm	5,0 cm	4,2 cm	6,7 cm	334-1553	RSZ-1553

CPG™ 321, Cohesive III™, Medium Height, Moderate Projection



Volume	Width	Height	Projection	A	Arc Length	Catalog #	Resterilizable Gel Sizer*
120 cc	9,0 cm	8,5 cm	3,3 cm	3,1 cm	4,3 cm	354-0908	RSZ-0908
135 cc	9,5 cm	8,9 cm	3,5 cm	3,2 cm	4,5 cm	354-0958	RSZ-0958
155 cc	10,0 cm	9,4 cm	3,7 cm	3,4 cm	4,7 cm	354-1008	RSZ-1008
180 cc	10,5 cm	9,9 cm	3,8 cm	3,6 cm	5,0 cm	354-1058	RSZ-1058
215 cc	11,0 cm	10,3 cm	3,9 cm	3,6 cm	5,1 cm	354-1108	RSZ-1108
245 cc	11,5 cm	10,8 cm	4,0 cm	3,8 cm	5,3 cm	354-1158	RSZ-1158
280 cc	12,0 cm	11,3 cm	4,2 cm	4,0 cm	5,6 cm	354-1208	RSZ-1208
315 cc	12,5 cm	11,8 cm	4,4 cm	4,1 cm	5,8 cm	354-1258	RSZ-1258
355 cc	13,0 cm	12,2 cm	4,6 cm	4,3 cm	6,0 cm	354-1308	RSZ-1308
395 cc	13,5 cm	12,7 cm	4,7 cm	4,5 cm	6,3 cm	354-1358	RSZ-1358
440 cc	14,0 cm	13,2 cm	4,9 cm	4,6 cm	6,5 cm	354-1408	RSZ-1408
480 cc	14,5 cm	13,6 cm	5,0 cm	5,0 cm	6,9 cm	354-1458	RSZ-1458
530 cc	15,0 cm	14,1 cm	5,2 cm	5,1 cm	7,2 cm	354-1508	RSZ-1508
640 cc	16,0 cm	15,0 cm	5,6 cm	5,5 cm	7,6 cm	354-1608	RSZ-1608
775 cc	17,0 cm	16,0 cm	5,9 cm	5,8 cm	8,1 cm	354-1708	RSZ-1708

CPG™ 311†, Cohesive III™, Low Height, Moderate Projection



Volume	Width	Height	Projection	A	Arc Length	Catalog #	Resterilizable Gel Sizer*
100 cc	9,0 cm	8,0 cm	3,0 cm	2,5 cm	4,1 cm	334-0901	RSZ-0090
120 cc	9,5 cm	8,5 cm	3,2 cm	2,6 cm	4,3 cm	334-0951	RSZ-0095
140 cc	10,0 cm	8,9 cm	3,4 cm	2,8 cm	4,5 cm	334-1001	RSZ-0100
160 cc	10,5 cm	9,4 cm	3,6 cm	2,9 cm	4,7 cm	334-1051	RSZ-0105
180 cc	11,0 cm	9,8 cm	3,7 cm	3,0 cm	5,0 cm	334-1101	RSZ-0110
210 cc	11,5 cm	10,3 cm	3,9 cm	3,2 cm	5,2 cm	334-1151	RSZ-0115
235 cc	12,0 cm	10,7 cm	4,1 cm	3,3 cm	5,4 cm	334-1201	RSZ-0120
270 cc	12,5 cm	11,2 cm	4,2 cm	3,5 cm	5,6 cm	334-1251	RSZ-0125
300 cc	13,0 cm	11,6 cm	4,4 cm	3,6 cm	5,9 cm	334-1301	RSZ-0130
335 cc	13,5 cm	12,0 cm	4,6 cm	3,7 cm	6,1 cm	334-1351	RSZ-0135
375 cc	14,0 cm	12,5 cm	4,7 cm	3,9 cm	6,3 cm	334-1401	RSZ-0140
415 cc	14,5 cm	12,9 cm	4,9 cm	4,0 cm	6,5 cm	334-1451	RSZ-0145
460 cc	15,0 cm	13,4 cm	5,1 cm	4,1 cm	6,8 cm	334-1501	RSZ-0150
510 cc	15,5 cm	13,8 cm	5,2 cm	4,3 cm	7,0 cm	334-1551	RSZ-0155
560 cc	16,0 cm	14,3 cm	5,4 cm	4,4 cm	7,2 cm	334-1601	RSZ-0160
615 cc	16,5 cm	14,7 cm	5,6 cm	4,6 cm	7,4 cm	334-1651	RSZ-0165

*Resterilizable up to 10 times.

†Available January 2010 (depending on country regulations)

Silicone Gel Breast Implants, Cohesive III™ CONT'D

CPG™ 332, Cohesive III™, Tall Height, Moderate *Plus* Projection



Volume	Width	Height	Projection	A	Arc Length	Catalog #	Resterilizable Gel Sizer*
145 cc	9,0 cm	9,4 cm	3,8 cm	2,8 cm	4,6 cm	334-0909	RSZ-0909
175 cc	9,5 cm	9,9 cm	4,0 cm	3,0 cm	4,9 cm	334-0959	RSZ-0959
205 cc	10,0 cm	10,4 cm	4,2 cm	3,1 cm	5,1 cm	334-1009	RSZ-1009
235 cc	10,5 cm	10,9 cm	4,4 cm	3,3 cm	5,4 cm	334-1059	RSZ-1059
270 cc	11,0 cm	11,5 cm	4,7 cm	3,5 cm	5,7 cm	334-1109	RSZ-1109
305 cc	11,5 cm	12,0 cm	4,9 cm	3,6 cm	5,9 cm	334-1159	RSZ-1159
350 cc	12,0 cm	12,5 cm	5,1 cm	3,8 cm	6,2 cm	334-1209	RSZ-1209
395 cc	12,5 cm	13,0 cm	5,3 cm	3,9 cm	6,4 cm	334-1259	RSZ-1259
445 cc	13,0 cm	13,5 cm	5,5 cm	4,1 cm	6,7 cm	334-1309	RSZ-1309
495 cc	13,5 cm	14,1 cm	5,7 cm	4,2 cm	7,0 cm	334-1359	RSZ-1359
555 cc	14,0 cm	14,6 cm	5,9 cm	4,4 cm	7,2 cm	334-1409	RSZ-1409
615 cc	14,5 cm	15,1 cm	6,1 cm	4,6 cm	7,5 cm	334-1459	RSZ-1459
680 cc	15,0 cm	15,6 cm	6,3 cm	4,7 cm	7,7 cm	334-1509	RSZ-1509

CPG™ 322, Cohesive III™, Medium Height, Moderate *Plus* Projection



Volume	Width	Height	Projection	A	Arc Length	Catalog #	Resterilizable Gel Sizer*
140 cc	9,0 cm	8,5 cm	3,8 cm	2,9 cm	4,7 cm	334-0905	RSZ-0905
165 cc	9,5 cm	8,9 cm	4,0 cm	3,0 cm	4,9 cm	334-0955	RSZ-0955
195 cc	10,0 cm	9,4 cm	4,2 cm	3,2 cm	5,2 cm	334-1005	RSZ-1005
225 cc	10,5 cm	9,9 cm	4,4 cm	3,3 cm	5,5 cm	334-1055	RSZ-1055
255 cc	11,0 cm	10,3 cm	4,7 cm	3,5 cm	5,7 cm	334-1105	RSZ-1105
295 cc	11,5 cm	10,8 cm	4,9 cm	3,7 cm	6,0 cm	334-1155	RSZ-1155
330 cc	12,0 cm	11,3 cm	5,1 cm	3,8 cm	6,3 cm	334-1205	RSZ-1205
375 cc	12,5 cm	11,8 cm	5,3 cm	4,0 cm	6,5 cm	334-1255	RSZ-1255
420 cc	13,0 cm	12,2 cm	5,5 cm	4,1 cm	6,8 cm	334-1305	RSZ-1305
475 cc	13,5 cm	12,7 cm	5,7 cm	4,3 cm	7,0 cm	334-1355	RSZ-1355
525 cc	14,0 cm	13,2 cm	5,9 cm	4,5 cm	7,3 cm	334-1405	RSZ-1405
585 cc	14,5 cm	13,6 cm	6,1 cm	4,6 cm	7,6 cm	334-1455	RSZ-1455
650 cc	15,0 cm	14,1 cm	6,3 cm	4,8 cm	7,8 cm	334-1505	RSZ-1505

CPG™ 312, Cohesive III™, Low Height, Moderate *Plus* Projection



Volume	Width	Height	Projection	A	Arc Length	Catalog #	Resterilizable Gel Sizer*
125 cc	9,0 cm	8,0 cm	3,8 cm	2,5 cm	4,6 cm	334-0907	RSZ-0907
145 cc	9,5 cm	8,4 cm	4,0 cm	2,6 cm	4,8 cm	334-0957	RSZ-0957
170 cc	10,0 cm	8,8 cm	4,2 cm	2,7 cm	5,1 cm	334-1007	RSZ-1007
195 cc	10,5 cm	9,3 cm	4,4 cm	2,9 cm	5,4 cm	334-1057	RSZ-1057
225 cc	11,0 cm	9,7 cm	4,7 cm	3,0 cm	5,6 cm	334-1107	RSZ-1107
255 cc	11,5 cm	10,2 cm	4,9 cm	3,1 cm	5,9 cm	334-1157	RSZ-1157
290 cc	12,0 cm	10,6 cm	5,1 cm	3,3 cm	6,1 cm	334-1207	RSZ-1207
330 cc	12,5 cm	11,1 cm	5,3 cm	3,4 cm	6,4 cm	334-1257	RSZ-1257
370 cc	13,0 cm	11,5 cm	5,5 cm	3,6 cm	6,6 cm	334-1307	RSZ-1307
415 cc	13,5 cm	12,0 cm	5,7 cm	3,7 cm	6,9 cm	334-1357	RSZ-1357
465 cc	14,0 cm	12,4 cm	5,9 cm	3,8 cm	7,1 cm	334-1407	RSZ-1407
515 cc	14,5 cm	12,8 cm	6,1 cm	4,0 cm	7,4 cm	334-1457	RSZ-1457
570 cc	15,0 cm	13,3 cm	6,3 cm	4,1 cm	7,7 cm	334-1507	RSZ-1507
690 cc	16,0 cm	14,2 cm	6,8 cm	4,4 cm	8,2 cm	334-1607	RSZ-1607

*Resterilizable up to 10 times.

Silicone Gel Breast Implants, Cohesive III™ CONT'D

CPG™ 333, Cohesive III™, Tall Height, High Projection



Volume	Width	Height	Projection	A	Arc Length	Catalog #	Resterilizable Gel Sizer*
180 cc	9,0 cm	9,4 cm	4,6 cm	3,1 cm	5,5 cm	334-0904	RSZ-4090
215 cc	9,5 cm	9,9 cm	4,8 cm	3,3 cm	5,8 cm	334-0954	RSZ-4095
250 cc	10,0 cm	10,4 cm	5,1 cm	3,4 cm	6,1 cm	334-1004	RSZ-4100
290 cc	10,5 cm	10,9 cm	5,3 cm	3,6 cm	6,4 cm	334-1054	RSZ-4105
330 cc	11,0 cm	11,5 cm	5,6 cm	3,8 cm	6,8 cm	334-1104	RSZ-4110
380 cc	11,5 cm	12,0 cm	5,8 cm	3,9 cm	7,1 cm	334-1154	RSZ-4115
430 cc	12,0 cm	12,5 cm	6,0 cm	4,1 cm	7,4 cm	334-1204	RSZ-4120
485 cc	12,5 cm	13,0 cm	6,2 cm	4,3 cm	7,7 cm	334-1254	RSZ-4125
545 cc	13,0 cm	13,5 cm	6,5 cm	4,5 cm	8,0 cm	334-1304	RSZ-4130
610 cc	13,5 cm	14,1 cm	6,7 cm	4,6 cm	8,3 cm	334-1354	RSZ-4135
680 cc	14,0 cm	14,6 cm	6,9 cm	4,8 cm	8,6 cm	334-1404	RSZ-4140
755 cc	14,5 cm	15,1 cm	7,1 cm	5,0 cm	8,9 cm	334-1454	RSZ-4145

CPG™ 323, Cohesive III™, Medium Height, High Projection



Volume	Width	Height	Projection	A	Arc Length	Catalog #	Resterilizable Gel Sizer*
165 cc	9,0 cm	8,5 cm	4,6 cm	3,0 cm	5,3 cm	334-0902	RSZ-0902
195 cc	9,5 cm	8,9 cm	4,8 cm	3,2 cm	5,6 cm	334-0952	RSZ-0952
225 cc	10,0 cm	9,4 cm	5,1 cm	3,4 cm	5,9 cm	334-1002	RSZ-1002
260 cc	10,5 cm	9,9 cm	5,3 cm	3,5 cm	6,2 cm	334-1052	RSZ-1052
300 cc	11,0 cm	10,3 cm	5,6 cm	3,7 cm	6,5 cm	334-1102	RSZ-1102
345 cc	11,5 cm	10,8 cm	5,8 cm	3,9 cm	6,8 cm	334-1152	RSZ-1152
390 cc	12,0 cm	11,3 cm	6,0 cm	4,0 cm	7,1 cm	334-1202	RSZ-1202
440 cc	12,5 cm	11,8 cm	6,2 cm	4,2 cm	7,4 cm	334-1252	RSZ-1252
495 cc	13,0 cm	12,2 cm	6,5 cm	4,4 cm	7,7 cm	334-1302	RSZ-1302
555 cc	13,5 cm	12,7 cm	6,7 cm	4,5 cm	8,0 cm	334-1352	RSZ-1352
620 cc	14,0 cm	13,2 cm	6,9 cm	4,7 cm	8,3 cm	334-1402	RSZ-1402
685 cc	14,5 cm	13,6 cm	7,1 cm	4,9 cm	8,6 cm	334-1452	RSZ-1452

CPG™ 313[†], Cohesive III™, Low Height, High Projection



Volume	Width	Height	Projection	A	Arc Length	Catalog #	Resterilizable Gel Sizer*
130 cc	9,0 cm	8,1 cm	4,4 cm	2,6 cm	5,2 cm	334-0906	RSZ-0906
155 cc	9,5 cm	8,6 cm	4,5 cm	2,7 cm	5,4 cm	334-0956	RSZ-0956
180 cc	10,0 cm	9,0 cm	4,6 cm	2,9 cm	5,7 cm	334-1006	RSZ-1006
210 cc	10,5 cm	9,5 cm	4,8 cm	3,0 cm	6,0 cm	334-1056	RSZ-1056
240 cc	11,0 cm	9,9 cm	4,9 cm	3,2 cm	6,3 cm	334-1106	RSZ-1106
270 cc	11,5 cm	10,3 cm	5,0 cm	3,3 cm	6,6 cm	334-1156	RSZ-1156
310 cc	12,0 cm	10,8 cm	5,2 cm	3,5 cm	6,9 cm	334-1206	RSZ-1206
350 cc	12,5 cm	11,2 cm	5,4 cm	3,6 cm	7,2 cm	334-1256	RSZ-1256
395 cc	13,0 cm	11,7 cm	5,6 cm	3,8 cm	7,4 cm	334-1306	RSZ-1306
440 cc	13,5 cm	12,2 cm	5,8 cm	3,9 cm	7,7 cm	334-1356	RSZ-1356
490 cc	14,0 cm	12,6 cm	6,1 cm	4,0 cm	8,0 cm	334-1406	RSZ-1406
545 cc	14,5 cm	13,1 cm	6,3 cm	4,2 cm	8,3 cm	334-1456	RSZ-1456
605 cc	15,0 cm	13,5 cm	6,6 cm	4,3 cm	8,6 cm	334-1506	RSZ-1506

*Resterilizable up to 10 times.

† Available January 2010 (depending on country regulations)

Becker Expander Breast Implants

Siltex™ Round Becker 25, Cohesive I™

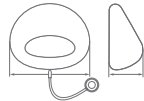
(25% Silicone Gel, Cohesive I™, in outer lumen, 75% Saline in inner lumen)



Volume	Gel Volume	TEMPORARY OVEREXPANSION VOLUMES		Total Saline	Total Gel-Saline	Diameter	Proj.	Cat.#
		Max Saline	Total Gel-Saline					
150 cc	40 cc	185 cc	225 cc	85-150 cc	125-190 cc	10,7 cm	2,4 cm	354-1500
200 cc	50 cc	250 cc	300 cc	125-200 cc	175-250 cc	11,6 cm	2,7 cm	354-2000
250 cc	60 cc	315 cc	375 cc	165-255 cc	225-315 cc	12,1 cm	3,0 cm	354-2500
300 cc	75 cc	375 cc	450 cc	200-300 cc	275-375 cc	12,9 cm	3,0 cm	354-3000
350 cc	90 cc	435 cc	525 cc	235-350 cc	325-440 cc	13,5 cm	3,0 cm	354-3500
400 cc	100 cc	500 cc	600 cc	275-400 cc	375-500 cc	13,7 cm	3,4 cm	354-4000
500 cc	125 cc	625 cc	750 cc	350-500 cc	475-625 cc	14,7 cm	3,7 cm	354-5000
600 cc	150 cc	750 cc	900 cc	425-600 cc	575-750 cc	15,6 cm	4,2 cm	354-6000
700 cc	175 cc	875 cc	1050 cc	500-700 cc	675-875 cc	16,8 cm	4,3 cm	354-7000
800 cc	200 cc	1000 cc	1200 cc	575-800 cc	775-1000 cc	17,2 cm	4,6 cm	354-8000

Siltex™ Contour Profile® Becker 35, Cohesive II™

(35% Silicone Gel, Cohesive II™, in outer lumen, 65% Saline in inner lumen)



Volume	Gel Volume	TEMPORARY OVEREXPANSION VOLUMES		Total Saline	Total Gel-Saline	Width	Height	Proj.	Cat.#
		Max Saline	Total Gel-Saline						
145 cc	50 cc	120 cc	170 cc	85-95 cc	135-145 cc	9,5 cm	8,3 cm	4,2 cm	324-0955
195 cc	70 cc	155 cc	225 cc	110-125 cc	180-195 cc	10,5 cm	9,1 cm	4,6 cm	324-1055
255 cc	90 cc	205 cc	295 cc	145-165 cc	235-255 cc	11,5 cm	10,0 cm	5,1 cm	324-1155
290 cc	100 cc	235 cc	335 cc	170-190 cc	270-290 cc	12,0 cm	10,5 cm	5,3 cm	324-1205
325 cc	110 cc	270 cc	380 cc	190-215 cc	300-325 cc	12,5 cm	10,9 cm	5,5 cm	324-1255
365 cc	125 cc	300 cc	425 cc	215-240 cc	340-365 cc	13,0 cm	11,3 cm	5,7 cm	324-1305
400 cc	130 cc	335 cc	465 cc	240-270 cc	370-400 cc	13,5 cm	11,8 cm	5,9 cm	324-1355
460 cc	160 cc	375 cc	535 cc	270-300 cc	430-460 cc	14,0 cm	12,2 cm	6,2 cm	324-1405
565 cc	195 cc	460 cc	655 cc	330-370 cc	525-565 cc	15,0 cm	13,1 cm	6,6 cm	324-1505
685 cc	240 cc	555 cc	795 cc	400-445 cc	640-685 cc	16,0 cm	13,9 cm	7,0 cm	324-1605

Siltex™ Round Becker 50, Cohesive I™

(50% Silicone Gel, Cohesive I™, in outer lumen, 50% Saline in inner lumen)



Volume	Gel Volume	Total Saline	Total Gel-Saline	Diameter	Proj.	Catalog #
300 cc	150 cc	150-200 cc	300-350 cc	12,9 cm	3,0 cm	354-1515
400 cc	200 cc	200-300 cc	400-500 cc	13,9 cm	3,4 cm	354-2020
500 cc	250 cc	250-350 cc	500-600 cc	14,7 cm	3,7 cm	354-2525
600 cc	300 cc	300-425 cc	600-725 cc	15,6 cm	4,2 cm	354-3030
700 cc	350 cc	350-500 cc	700-850 cc	16,0 cm	5,0 cm	354-3535

Spectra® Adjustable Gel Breast Implants

Siltex™ Round Spectra® Adjustable Gel Implant‡



Volume	Gel Volume	Saline Volume	NOMINAL FILL		MAXIMUM FILL		Catalog #
			Diameter	Projection	Diameter	Projection	
190 cc	180 cc	10-50cc	9,9 cm	4,1 cm	9,4 cm	5,1 cm	314-4190
215 cc	205 cc	10-50cc	10,2 cm	4,3 cm	9,8 cm	5,2 cm	314-4215
240 cc	230 cc	10-50cc	10,5 cm	4,5 cm	10,2 cm	5,3 cm	314-4240
260 cc	250 cc	10-50cc	10,9 cm	4,6 cm	10,5 cm	5,4 cm	314-4260
285 cc	275 cc	10-50cc	11,1 cm	4,7 cm	10,8 cm	5,5 cm	314-4285
310 cc	300 cc	10-50cc	11,5 cm	4,8 cm	11,1 cm	5,6 cm	314-4310
335 cc	325 cc	10-50cc	11,7 cm	4,9 cm	11,4 cm	5,7 cm	314-4335
355 cc	345 cc	10-50cc	12,0 cm	5,0 cm	11,7 cm	5,8 cm	314-4355
380 cc	370 cc	10-50cc	12,3 cm	5,1 cm	11,9 cm	5,8 cm	314-4380
405 cc	395 cc	10-50cc	12,5 cm	5,2 cm	12,2 cm	5,9 cm	314-4405
430 cc	420 cc	10-50cc	12,7 cm	5,2 cm	12,4 cm	6,0 cm	314-4430
480 cc	465 cc	15-75cc	13,2 cm	5,4 cm	12,9 cm	6,1 cm	314-4480
525 cc	510 cc	15-75cc	13,5 cm	5,6 cm	13,3 cm	6,2 cm	314-4525
575 cc	560 cc	15-75cc	14,0 cm	5,7 cm	13,8 cm	6,4 cm	314-4575
620 cc	605 cc	15-100cc	14,3 cm	5,8 cm	14,1 cm	6,5 cm	314-4620
665 cc	650 cc	15-100cc	14,7 cm	6,0 cm	14,5 cm	6,6 cm	314-4665
760 cc	745 cc	15-100cc	15,4 cm	6,3 cm	15,1 cm	6,7 cm	314-4760

Smooth Round Spectra® Adjustable Gel Implant‡



Volume	Gel Volume	Saline Volume	NOMINAL FILL		MAXIMUM FILL		Catalog #
			Diameter	Projection	Diameter	Projection	
190 cc	180 cc	10-50cc	9,7 cm	4,0 cm	9,4 cm	5,1 cm	310-4190
215 cc	205 cc	10-50cc	10,1 cm	4,2 cm	9,8 cm	5,2 cm	310-4215
240 cc	230 cc	10-50cc	10,5 cm	4,3 cm	10,2 cm	5,3 cm	310-4240
260 cc	250 cc	10-50cc	10,8 cm	4,4 cm	10,5 cm	5,4 cm	310-4260
285 cc	275 cc	10-50cc	11,1 cm	4,5 cm	10,8 cm	5,5 cm	310-4285
310 cc	300 cc	10-50cc	11,4 cm	4,6 cm	11,1 cm	5,6 cm	310-4310
335 cc	325 cc	10-50cc	11,7 cm	4,8 cm	11,4 cm	5,7 cm	310-4335
355 cc	345 cc	10-50cc	12,0 cm	4,8 cm	11,7 cm	5,8 cm	310-4355
380 cc	370 cc	10-50cc	12,2 cm	5,0 cm	11,9 cm	5,8 cm	310-4380
405 cc	395 cc	10-50cc	12,5 cm	5,0 cm	12,2 cm	5,9 cm	310-4405
430 cc	420 cc	10-50cc	12,8 cm	5,1 cm	12,4 cm	6,0 cm	310-4430
480 cc	465 cc	15-75cc	13,2 cm	5,3 cm	12,9 cm	6,1 cm	310-4480
525 cc	510 cc	15-75cc	13,6 cm	5,5 cm	13,3 cm	6,2 cm	310-4525
575 cc	560 cc	15-75cc	14,0 cm	5,6 cm	13,8 cm	6,4 cm	310-4575
620 cc	605 cc	15-100cc	14,4 cm	5,7 cm	14,1 cm	6,5 cm	310-4620
665 cc	650 cc	15-100cc	14,8 cm	5,8 cm	14,5 cm	6,6 cm	310-4665
760 cc	745 cc	15-100cc	15,5 cm	6,0 cm	15,1 cm	6,7 cm	310-4760

‡Dome Pack for post-operative adjustment can be purchased separately

Sterile Resterilizable Gel Sizers*

Round Low Profile



Volume	Diameter	Projection	Catalog #
100 cc	9,4 cm	1,9 cm	RSZ-1100
125 cc	10,1 cm	2,0 cm	RSZ-1125
150 cc	10,7 cm	2,2 cm	RSZ-1150
175 cc	11,3 cm	2,3 cm	RSZ-1175
200 cc	11,8 cm	2,4 cm	RSZ-1200
225 cc	12,3 cm	2,5 cm	RSZ-1225
250 cc	12,7 cm	2,6 cm	RSZ-1250
275 cc	13,1 cm	2,7 cm	RSZ-1275
300 cc	13,5 cm	2,7 cm	RSZ-1300
325 cc	13,9 cm	2,8 cm	RSZ-1325
350 cc	14,2 cm	2,9 cm	RSZ-1350
375 cc	14,5 cm	2,9 cm	RSZ-1375
400 cc	14,8 cm	3,0 cm	RSZ-1400
450 cc	15,4 cm	3,1 cm	RSZ-1450
500 cc	16,0 cm	3,3 cm	RSZ-1500
550 cc	16,5 cm	3,4 cm	RSZ-1550
600 cc	17,0 cm	3,5 cm	RSZ-1600

Round Moderate Profile



Volume	Diameter	Projection	Catalog #
100 cc	9,3 cm	2,1 cm	RSZ-7100
125 cc	10,0 cm	2,2 cm	RSZ-7125
150 cc	10,3 cm	2,3 cm	RSZ-7150
175 cc	11,2 cm	2,4 cm	RSZ-7175
200 cc	11,7 cm	2,5 cm	RSZ-7200
225 cc	12,2 cm	2,6 cm	RSZ-7225
250 cc	12,3 cm	2,8 cm	RSZ-7250
275 cc	13,2 cm	2,9 cm	RSZ-7275
300 cc	13,5 cm	3,0 cm	RSZ-7300
325 cc	13,9 cm	3,0 cm	RSZ-7325
350 cc	14,2 cm	3,1 cm	RSZ-7350
375 cc	14,4 cm	3,2 cm	RSZ-7375
400 cc	14,5 cm	3,2 cm	RSZ-7400
450 cc	14,9 cm	3,4 cm	RSZ-7450
500 cc	15,2 cm	3,6 cm	RSZ-7500
550 cc	15,9 cm	3,6 cm	RSZ-7550
600 cc	16,5 cm	3,7 cm	RSZ-7600
700 cc	17,4 cm	3,9 cm	RSZ-7700
800 cc	18,2 cm	4,1 cm	RSZ-7800

*Resterilizable up to 10 times.

Sterile Resterilizable Gel Sizers* CONT'D

Round Moderate *Plus* Profile

Volume	Diameter	Projection	Catalog #
100 cc	8,2 cm	2,7 cm	RSZ-1001
125 cc	8,9 cm	2,8 cm	RSZ-1251
150 cc	9,5 cm	2,9 cm	RSZ-1501
175 cc	10,0 cm	3,1 cm	RSZ-1751
200 cc	10,5 cm	3,2 cm	RSZ-2001
225 cc	10,9 cm	3,3 cm	RSZ-2251
250 cc	11,3 cm	3,4 cm	RSZ-2501
275 cc	11,7 cm	3,5 cm	RSZ-2751
300 cc	12,0 cm	3,6 cm	RSZ-3001
325 cc	12,3 cm	3,8 cm	RSZ-3251
350 cc	12,5 cm	3,9 cm	RSZ-3501
375 cc	12,8 cm	4,0 cm	RSZ-3751
400 cc	13,1 cm	4,0 cm	RSZ-4001
450 cc	13,6 cm	4,2 cm	RSZ-4501
500 cc	14,1 cm	4,3 cm	RSZ-5001
550 cc	14,6 cm	4,5 cm	RSZ-5501
600 cc	15,0 cm	4,6 cm	RSZ-6001
700 cc	15,8 cm	4,9 cm	RSZ-7001
800 cc	16,5 cm	5,1 cm	RSZ-8001

Round High Profile



Volume	Diameter	Projection	Catalog #
125 cc	8,3 cm	3,5 cm	RSZ-1254
150 cc	8,8 cm	3,7 cm	RSZ-1504
175 cc	9,3 cm	3,9 cm	RSZ-1754
200 cc	9,7 cm	4,0 cm	RSZ-2004
225 cc	10,1 cm	4,2 cm	RSZ-2254
250 cc	10,5 cm	4,3 cm	RSZ-2504
275 cc	10,8 cm	4,4 cm	RSZ-2754
300 cc	11,1 cm	4,5 cm	RSZ-3004
325 cc	11,4 cm	4,6 cm	RSZ-3254
350 cc	11,7 cm	4,8 cm	RSZ-3504
375 cc	12,0 cm	4,8 cm	RSZ-3754
400 cc	12,2 cm	5,0 cm	RSZ-4004
425 cc	12,5 cm	5,0 cm	RSZ-4254
450 cc	12,8 cm	5,1 cm	RSZ-4504
500 cc	13,2 cm	5,3 cm	RSZ-5004
550 cc	13,6 cm	5,5 cm	RSZ-5504
600 cc	14,0 cm	5,6 cm	RSZ-6004
650 cc	14,4 cm	5,7 cm	RSZ-6504
700 cc	14,8 cm	5,8 cm	RSZ-7004
800 cc	15,5 cm	6,0 cm	RSZ-8004

*Resterilizable up to 10 times.

Sterile Resterilizable Gel Sizers* CONT'D

Round Ultra High Profile



Volume	Diameter	Projection	Catalog #
135 cc	7,8 cm	4,1 cm	RSZ-5135
160 cc	8,2 cm	4,3 cm	RSZ-5160
185 cc	8,4 cm	4,4 cm	RSZ-5185
215 cc	8,7 cm	4,5 cm	RSZ-5215
240 cc	9,0 cm	4,7 cm	RSZ-5240
270 cc	9,3 cm	4,8 cm	RSZ-5270
295 cc	9,7 cm	5,0 cm	RSZ-5295
320 cc	9,8 cm	5,1 cm	RSZ-5320
350 cc	10,1 cm	5,2 cm	RSZ-5350
375 cc	10,4 cm	5,3 cm	RSZ-5375
400 cc	10,6 cm	5,4 cm	RSZ-5400
430 cc	10,9 cm	5,6 cm	RSZ-5430
455 cc	11,2 cm	5,7 cm	RSZ-5455
480 cc	11,4 cm	5,8 cm	RSZ-5480
535 cc	12,0 cm	6,1 cm	RSZ-5535
590 cc	12,5 cm	6,3 cm	RSZ-5590

*Resterilizable up to 10 times.

Sterile Resterilizable Gel Sizers* CONT'D

CPG™ 331†, 

Cohesive III™, Tall Height, Moderate Projection



Volume	Width	Height	Projection	A	Arc Length	Catalog #
125 cc	9,0 cm	9,2 cm	3,2 cm	2,4 cm	3,9 cm	RSZ-0903
150 cc	9,5 cm	9,7 cm	3,3 cm	2,6 cm	4,1 cm	RSZ-0953
175 cc	10,0 cm	10,2 cm	3,4 cm	2,7 cm	4,3 cm	RSZ-1003
200 cc	10,5 cm	10,7 cm	3,5 cm	2,8 cm	4,6 cm	RSZ-1053
230 cc	11,0 cm	11,3 cm	3,6 cm	3,0 cm	4,8 cm	RSZ-1103
265 cc	11,5 cm	11,8 cm	3,7 cm	3,1 cm	5,0 cm	RSZ-1153
300 cc	12,0 cm	12,3 cm	3,9 cm	3,2 cm	5,2 cm	RSZ-1203
340 cc	12,5 cm	12,8 cm	4,0 cm	3,4 cm	5,4 cm	RSZ-1253
380 cc	13,0 cm	13,3 cm	4,1 cm	3,5 cm	5,6 cm	RSZ-1303
425 cc	13,5 cm	13,8 cm	4,3 cm	3,6 cm	5,9 cm	RSZ-1353
475 cc	14,0 cm	14,3 cm	4,5 cm	3,8 cm	6,1 cm	RSZ-1403
530 cc	14,5 cm	14,8 cm	4,6 cm	3,9 cm	6,3 cm	RSZ-1453
585 cc	15,0 cm	15,3 cm	4,8 cm	4,0 cm	6,5 cm	RSZ-1503
645 cc	15,5 cm	15,9 cm	5,0 cm	4,2 cm	6,7 cm	RSZ-1553

CPG™ 321,

Cohesive III™, Medium Height, Moderate Projection



Volume	Width	Height	Projection	A	Arc Length	Catalog #
120 cc	9,0 cm	8,5 cm	3,3 cm	3,1 cm	4,3 cm	RSZ-0908
135 cc	9,5 cm	8,9 cm	3,5 cm	3,2 cm	4,5 cm	RSZ-0958
155 cc	10,0 cm	9,4 cm	3,7 cm	3,4 cm	4,7 cm	RSZ-1008
180 cc	10,5 cm	9,9 cm	3,8 cm	3,6 cm	5,0 cm	RSZ-1058
215 cc	11,0 cm	10,3 cm	3,9 cm	3,6 cm	5,1 cm	RSZ-1108
245 cc	11,5 cm	10,8 cm	4,0 cm	3,8 cm	5,3 cm	RSZ-1158
280 cc	12,0 cm	11,3 cm	4,2 cm	4,0 cm	5,6 cm	RSZ-1208
315 cc	12,5 cm	11,8 cm	4,4 cm	4,1 cm	5,8 cm	RSZ-1258
355 cc	13,0 cm	12,2 cm	4,6 cm	4,3 cm	6,0 cm	RSZ-1308
395 cc	13,5 cm	12,7 cm	4,7 cm	4,5 cm	6,3 cm	RSZ-1358
440 cc	14,0 cm	13,2 cm	4,9 cm	4,6 cm	6,5 cm	RSZ-1408
480 cc	14,5 cm	13,6 cm	5,0 cm	5,0 cm	6,9 cm	RSZ-1458
530 cc	15,0 cm	14,1 cm	5,2 cm	5,1 cm	7,2 cm	RSZ-1508
640 cc	16,0 cm	15,0 cm	5,6 cm	5,5 cm	7,6 cm	RSZ-1608
775 cc	17,0 cm	16,0 cm	5,9 cm	5,8 cm	8,1 cm	RSZ-1708

CPG™ 311†, 

Cohesive III™, Low Height, Moderate Projection



Volume	Width	Height	Projection	A	Arc Length	Catalog #
100 cc	9,0 cm	8,0 cm	3,0 cm	2,5 cm	4,1 cm	RSZ-0090
120 cc	9,5 cm	8,5 cm	3,2 cm	2,6 cm	4,3 cm	RSZ-0095
140 cc	10,0 cm	8,9 cm	3,4 cm	2,8 cm	4,5 cm	RSZ-0100
160 cc	10,5 cm	9,4 cm	3,6 cm	2,9 cm	4,7 cm	RSZ-0105
180 cc	11,0 cm	9,8 cm	3,7 cm	3,0 cm	5,0 cm	RSZ-0110
210 cc	11,5 cm	10,3 cm	3,9 cm	3,2 cm	5,2 cm	RSZ-0115
235 cc	12,0 cm	10,7 cm	4,1 cm	3,3 cm	5,4 cm	RSZ-0120
270 cc	12,5 cm	11,2 cm	4,2 cm	3,5 cm	5,6 cm	RSZ-0125
300 cc	13,0 cm	11,6 cm	4,4 cm	3,6 cm	5,9 cm	RSZ-0130
335 cc	13,5 cm	12,0 cm	4,6 cm	3,7 cm	6,1 cm	RSZ-0135
375 cc	14,0 cm	12,5 cm	4,7 cm	3,9 cm	6,3 cm	RSZ-0140
415 cc	14,5 cm	12,9 cm	4,9 cm	4,0 cm	6,5 cm	RSZ-0145
460 cc	15,0 cm	13,4 cm	5,1 cm	4,1 cm	6,8 cm	RSZ-0150
510 cc	15,5 cm	13,8 cm	5,2 cm	4,3 cm	7,0 cm	RSZ-0155
560 cc	16,0 cm	14,3 cm	5,4 cm	4,4 cm	7,2 cm	RSZ-0160
615 cc	16,5 cm	14,7 cm	5,6 cm	4,6 cm	7,4 cm	RSZ-0165

*Resterilizable up to 10 times.

† Available January 2010 (depending on country regulations)

Sterile Resterilizable Gel Sizers* CONT'D

CPG™ 332,
Cohesive III™, Tall Height, Moderate *Plus* Projection

Volume	Width	Height	Projection	A	Arc Length	Catalog #
145 cc	9,0 cm	9,4 cm	3,8 cm	2,8 cm	4,6 cm	RSZ-0909
175 cc	9,5 cm	9,9 cm	4,0 cm	3,0 cm	4,9 cm	RSZ-0959
205 cc	10,0 cm	10,4 cm	4,2 cm	3,1 cm	5,1 cm	RSZ-1009
235 cc	10,5 cm	10,9 cm	4,4 cm	3,3 cm	5,4 cm	RSZ-1059
270 cc	11,0 cm	11,5 cm	4,7 cm	3,5 cm	5,7 cm	RSZ-1109
305 cc	11,5 cm	12,0 cm	4,9 cm	3,6 cm	5,9 cm	RSZ-1159
350 cc	12,0 cm	12,5 cm	5,1 cm	3,8 cm	6,2 cm	RSZ-1209
395 cc	12,5 cm	13,0 cm	5,3 cm	3,9 cm	6,4 cm	RSZ-1259
445 cc	13,0 cm	13,5 cm	5,5 cm	4,1 cm	6,7 cm	RSZ-1309
495 cc	13,5 cm	14,1 cm	5,7 cm	4,2 cm	7,0 cm	RSZ-1359
555 cc	14,0 cm	14,6 cm	5,9 cm	4,4 cm	7,2 cm	RSZ-1409
615 cc	14,5 cm	15,1 cm	6,1 cm	4,6 cm	7,5 cm	RSZ-1459
680 cc	15,0 cm	15,6 cm	6,3 cm	4,7 cm	7,7 cm	RSZ-1509

CPG™ 322,
Cohesive III™, Medium Height, Moderate *Plus* Projection

Volume	Width	Height	Projection	A	Arc Length	Catalog #
140 cc	9,0 cm	8,5 cm	3,8 cm	2,9 cm	4,7 cm	RSZ-0905
165 cc	9,5 cm	8,9 cm	4,0 cm	3,0 cm	4,9 cm	RSZ-0955
195 cc	10,0 cm	9,4 cm	4,2 cm	3,2 cm	5,2 cm	RSZ-1005
225 cc	10,5 cm	9,9 cm	4,4 cm	3,3 cm	5,5 cm	RSZ-1055
255 cc	11,0 cm	10,3 cm	4,7 cm	3,5 cm	5,7 cm	RSZ-1105
295 cc	11,5 cm	10,8 cm	4,9 cm	3,7 cm	6,0 cm	RSZ-1155
330 cc	12,0 cm	11,3 cm	5,1 cm	3,8 cm	6,3 cm	RSZ-1205
375 cc	12,5 cm	11,8 cm	5,3 cm	4,0 cm	6,5 cm	RSZ-1255
420 cc	13,0 cm	12,2 cm	5,5 cm	4,1 cm	6,8 cm	RSZ-1305
475 cc	13,5 cm	12,7 cm	5,7 cm	4,3 cm	7,0 cm	RSZ-1355
525 cc	14,0 cm	13,2 cm	5,9 cm	4,5 cm	7,3 cm	RSZ-1405
585 cc	14,5 cm	13,6 cm	6,1 cm	4,6 cm	7,6 cm	RSZ-1455
650 cc	15,0 cm	14,1 cm	6,3 cm	4,8 cm	7,8 cm	RSZ-1505

CPG™ 312,
Cohesive III™, Low Height, Moderate *Plus* Projection

Volume	Width	Height	Projection	A	Arc Length	Catalog #
125 cc	9,0 cm	8,0 cm	3,8 cm	2,5 cm	4,6 cm	RSZ-0907
145 cc	9,5 cm	8,4 cm	4,0 cm	2,6 cm	4,8 cm	RSZ-0957
170 cc	10,0 cm	8,8 cm	4,2 cm	2,7 cm	5,1 cm	RSZ-1007
195 cc	10,5 cm	9,3 cm	4,4 cm	2,9 cm	5,4 cm	RSZ-1057
225 cc	11,0 cm	9,7 cm	4,7 cm	3,0 cm	5,6 cm	RSZ-1107
255 cc	11,5 cm	10,2 cm	4,9 cm	3,1 cm	5,9 cm	RSZ-1157
290 cc	12,0 cm	10,6 cm	5,1 cm	3,3 cm	6,1 cm	RSZ-1207
330 cc	12,5 cm	11,1 cm	5,3 cm	3,4 cm	6,4 cm	RSZ-1257
370 cc	13,0 cm	11,5 cm	5,5 cm	3,6 cm	6,6 cm	RSZ-1307
415 cc	13,5 cm	12,0 cm	5,7 cm	3,7 cm	6,9 cm	RSZ-1357
465 cc	14,0 cm	12,4 cm	5,9 cm	3,8 cm	7,1 cm	RSZ-1407
515 cc	14,5 cm	12,8 cm	6,1 cm	4,0 cm	7,4 cm	RSZ-1457
570 cc	15,0 cm	13,3 cm	6,3 cm	4,1 cm	7,7 cm	RSZ-1507
690 cc	16,0 cm	14,2 cm	6,8 cm	4,4 cm	8,2 cm	RSZ-1607

*Resterilizable up to 10 times.

Sterile Resterilizable Gel Sizers* CONT'D

CPG™ 333,
Cohesive III™, Tall Height, High Projection

Volume	Width	Height	Projection	A	Arc Length	Catalog #
180 cc	9,0 cm	9,4 cm	4,6 cm	3,1 cm	5,5 cm	RSZ-4090
215 cc	9,5 cm	9,9 cm	4,8 cm	3,3 cm	5,8 cm	RSZ-4095
250 cc	10,0 cm	10,4 cm	5,1 cm	3,4 cm	6,1 cm	RSZ-4100
290 cc	10,5 cm	10,9 cm	5,3 cm	3,6 cm	6,4 cm	RSZ-4105
330 cc	11,0 cm	11,5 cm	5,6 cm	3,8 cm	6,8 cm	RSZ-4110
380 cc	11,5 cm	12,0 cm	5,8 cm	3,9 cm	7,1 cm	RSZ-4115
430 cc	12,0 cm	12,5 cm	6,0 cm	4,1 cm	7,4 cm	RSZ-4120
485 cc	12,5 cm	13,0 cm	6,2 cm	4,3 cm	7,7 cm	RSZ-4125
545 cc	13,0 cm	13,5 cm	6,5 cm	4,5 cm	8,0 cm	RSZ-4130
610 cc	13,5 cm	14,1 cm	6,7 cm	4,6 cm	8,3 cm	RSZ-4135
680 cc	14,0 cm	14,6 cm	6,9 cm	4,8 cm	8,6 cm	RSZ-4140
755 cc	14,5 cm	15,1 cm	7,1 cm	5,0 cm	8,9 cm	RSZ-4145

CPG™ 323,
Cohesive III™, Medium Height, High Projection

Volume	Width	Height	Projection	A	Arc Length	Catalog #
165 cc	9,0 cm	8,5 cm	4,6 cm	3,0 cm	5,3 cm	RSZ-0902
195 cc	9,5 cm	8,9 cm	4,8 cm	3,2 cm	5,6 cm	RSZ-0952
225 cc	10,0 cm	9,4 cm	5,1 cm	3,4 cm	5,9 cm	RSZ-1002
260 cc	10,5 cm	9,9 cm	5,3 cm	3,5 cm	6,2 cm	RSZ-1052
300 cc	11,0 cm	10,3 cm	5,6 cm	3,7 cm	6,5 cm	RSZ-1102
345 cc	11,5 cm	10,8 cm	5,8 cm	3,9 cm	6,8 cm	RSZ-1152
390 cc	12,0 cm	11,3 cm	6,0 cm	4,0 cm	7,1 cm	RSZ-1202
440 cc	12,5 cm	11,8 cm	6,2 cm	4,2 cm	7,4 cm	RSZ-1252
495 cc	13,0 cm	12,2 cm	6,5 cm	4,4 cm	7,7 cm	RSZ-1302
555 cc	13,5 cm	12,7 cm	6,7 cm	4,5 cm	8,0 cm	RSZ-1352
620 cc	14,0 cm	13,2 cm	6,9 cm	4,7 cm	8,3 cm	RSZ-1402
685 cc	14,5 cm	13,6 cm	7,1 cm	4,9 cm	8,6 cm	RSZ-1452

CPG™ 313[†], 
Cohesive III™, Low Height, High Projection

Volume	Width	Height	Projection	A	Arc Length	Catalog #
130 cc	9,0 cm	8,1 cm	4,4 cm	2,6 cm	5,2 cm	RSZ-0906
155 cc	9,5 cm	8,6 cm	4,5 cm	2,7 cm	5,4 cm	RSZ-0956
180 cc	10,0 cm	9,0 cm	4,6 cm	2,9 cm	5,7 cm	RSZ-1006
210 cc	10,5 cm	9,5 cm	4,8 cm	3,0 cm	6,0 cm	RSZ-1056
240 cc	11,0 cm	9,9 cm	4,9 cm	3,2 cm	6,3 cm	RSZ-1106
270 cc	11,5 cm	10,3 cm	5,0 cm	3,3 cm	6,6 cm	RSZ-1156
310 cc	12,0 cm	10,8 cm	5,2 cm	3,5 cm	6,9 cm	RSZ-1206
350 cc	12,5 cm	11,2 cm	5,4 cm	3,6 cm	7,2 cm	RSZ-1256
395 cc	13,0 cm	11,7 cm	5,6 cm	3,8 cm	7,4 cm	RSZ-1306
440 cc	13,5 cm	12,2 cm	5,8 cm	3,9 cm	7,7 cm	RSZ-1356
490 cc	14,0 cm	12,6 cm	6,1 cm	4,0 cm	8,0 cm	RSZ-1406
545 cc	14,5 cm	13,1 cm	6,3 cm	4,2 cm	8,3 cm	RSZ-1456
605 cc	15,0 cm	13,5 cm	6,6 cm	4,3 cm	8,6 cm	RSZ-1506

*Resterilizable up to 10 times.

† Available January 2010 (depending on country regulations)

Saline Breast Implants – Round

Siltex™ Round Moderate Profile



Volume	Diameter	Projection	Catalog #	Sterile Saline Sizer†
125 + 25 cc	9,5 cm	3,0 cm	354-2610	351-125SZ
150 + 25 cc	10,0 cm	3,1 cm	354-2615	
175 + 25 cc	10,6 cm	3,3 cm	354-2620	351-175SZ
200 + 25 cc	11,0 cm	3,4 cm	354-2625	
225 + 25 cc	11,5 cm	3,5 cm	354-2630	351-225SZ
250 + 25 cc	11,9 cm	3,6 cm	354-2635	
275 + 25 cc	12,3 cm	3,7 cm	354-2640	351-275SZ
300 + 25 cc	12,6 cm	3,7 cm	354-2645	
325 + 50 cc	13,0 cm	3,8 cm	354-2650	351-325SZ
350 + 50 cc	13,3 cm	3,9 cm	354-2655	
375 + 50 cc	13,6 cm	4,0 cm	354-2660	351-375SZ
425 + 50 cc	14,2 cm	4,1 cm	354-2670	351-425SZ
475 + 50 cc	14,8 cm	4,2 cm	354-2680	351-475SZ

Smooth Round Moderate Profile



NOMINAL FILL			MAXIMUM FILL			Catalog #	Sterile Saline Sizer†
Volume	Diameter	Projection	Volume	Diameter	Projection		
125 cc	9,5 cm	3,0 cm	150 cc	9,1 cm	3,4 cm	350-1610	351-125SZ
150 cc	10,0 cm	3,1 cm	175 cc	9,6 cm	3,7 cm	350-1615	
175 cc	10,6 cm	3,3 cm	200 cc	10,0 cm	3,9 cm	350-1620	351-175SZ
200 cc	11,0 cm	3,4 cm	225 cc	10,4 cm	3,9 cm	350-1625	
225 cc	11,5 cm	3,5 cm	250 cc	10,9 cm	4,0 cm	350-1630	351-225SZ
250 cc	11,9 cm	3,6 cm	275 cc	11,2 cm	4,1 cm	350-1635	
275 cc	12,3 cm	3,7 cm	300 cc	11,7 cm	4,2 cm	350-1640	351-275SZ
300 cc	12,6 cm	3,7 cm	325 cc	12,1 cm	4,3 cm	350-1645	
325 cc	13,0 cm	3,8 cm	375 cc	12,3 cm	4,5 cm	350-1650	351-325SZ
350 cc	13,3 cm	3,9 cm	400 cc	12,6 cm	4,7 cm	350-1655	
375 cc	13,6 cm	4,0 cm	425 cc	12,8 cm	4,8 cm	350-1660	351-375SZ
425 cc	14,2 cm	4,1 cm	475 cc	13,5 cm	4,9 cm	350-1670	351-425SZ
475 cc	14,8 cm	4,2 cm	525 cc	14,2 cm	4,9 cm	350-1680	351-475SZ
525 cc	15,0 cm	4,2 cm	575 cc	14,5 cm	5,1 cm	350-1685	
575 cc	15,0 cm	4,5 cm	625 cc	14,8 cm	5,1 cm	350-1690	
625 cc	15,2 cm	4,6 cm	700 cc	14,9 cm	5,6 cm	350-1695	
700 cc	15,6 cm	4,9 cm	775 cc	14,9 cm	5,8 cm	350-1697	

†Single Use Only

Saline Breast Implants – Round CONT'D

Smooth Round Moderate *Plus* Profile

NOMINAL FILL			MAXIMUM FILL			Catalog #	Sterile Saline Sizer [†]
Volume	Diameter	Projection	Volume	Diameter	Projection		
175 cc	9,5 cm	3,5 cm	210 cc	9,3 cm	4,2 cm	350-2175	351-2175SZ
200 cc	10,0 cm	3,7 cm	240 cc	9,7 cm	4,4 cm	350-2200	351-2200SZ
225 cc	10,4 cm	3,8 cm	270 cc	10,1 cm	4,6 cm	350-2225	351-2225SZ
250 cc	10,8 cm	4,0 cm	300 cc	10,5 cm	4,7 cm	350-2250	351-2250SZ
275 cc	11,0 cm	4,1 cm	330 cc	10,8 cm	4,9 cm	350-2275	351-2275SZ
300 cc	11,5 cm	4,3 cm	360 cc	11,2 cm	5,0 cm	350-2300	351-2300SZ
325 cc	11,9 cm	4,4 cm	390 cc	11,5 cm	5,2 cm	350-2325	351-2325SZ
350 cc	12,1 cm	4,5 cm	420 cc	11,7 cm	5,3 cm	350-2350	351-2350SZ
375 cc	12,3 cm	4,6 cm	450 cc	12,0 cm	5,4 cm	350-2375	351-2375SZ
400 cc	12,6 cm	4,7 cm	480 cc	12,3 cm	5,5 cm	350-2400	351-2400SZ
425 cc	12,9 cm	4,8 cm	510 cc	12,5 cm	5,6 cm	350-2425	351-2425SZ
450 cc	13,0 cm	4,9 cm	540 cc	12,8 cm	5,7 cm	350-2450	351-2450SZ
475 cc	13,3 cm	5,0 cm	570 cc	13,0 cm	5,8 cm	350-2475	351-2475SZ
500 cc	13,6 cm	5,1 cm	600 cc	13,2 cm	5,9 cm	350-2500	351-2500SZ
550 cc	14,0 cm	5,3 cm	660 cc	13,7 cm	6,1 cm	350-2550	351-2550SZ
600 cc	14,5 cm	5,5 cm	720 cc	14,1 cm	6,3 cm	350-2600	351-2600SZ
650 cc	14,8 cm	5,6 cm	780 cc	14,4 cm	6,5 cm	350-2650	351-2650SZ
700 cc	15,2 cm	5,8 cm	840 cc	14,8 cm	6,6 cm	350-2700	351-2700SZ
750 cc	15,6 cm	5,9 cm	900 cc	15,1 cm	6,8 cm	350-2750	351-2750SZ
800 cc	16,1 cm	6,0 cm	960 cc	15,5 cm	7,0 cm	350-2800	351-2800SZ

Smooth Round High Profile



NOMINAL FILL			MAXIMUM FILL			Catalog #	Sterile Saline Sizer [†]
Volume	Diameter	Projection	Volume	Diameter	Projection		
170 cc	9,0 cm	4,0 cm	200 cc	8,8 cm	4,9 cm	350-3170	
190 cc	9,3 cm	4,1 cm	225 cc	9,1 cm	5,1 cm	350-3190	351-3190SZ
210 cc	9,6 cm	4,2 cm	250 cc	9,5 cm	5,3 cm	350-3210	
230 cc	10,0 cm	4,3 cm	275 cc	9,8 cm	5,5 cm	350-3230	351-3230SZ
250 cc	10,2 cm	4,5 cm	300 cc	10,0 cm	5,6 cm	350-3250	
270 cc	10,4 cm	4,6 cm	325 cc	10,2 cm	5,8 cm	350-3270	351-3270SZ
290 cc	10,8 cm	4,7 cm	350 cc	10,5 cm	5,9 cm	350-3290	351-3290SZ
310 cc	11,0 cm	4,8 cm	375 cc	10,7 cm	6,0 cm	350-3310	351-3310SZ
330 cc	11,3 cm	4,8 cm	400 cc	11,0 cm	6,2 cm	350-3330	351-3330SZ
380 cc	11,7 cm	5,2 cm	450 cc	11,4 cm	6,4 cm	350-3380	351-3380SZ
420 cc	12,0 cm	5,4 cm	500 cc	11,7 cm	6,7 cm	350-3420	351-3420SZ
460 cc	12,4 cm	5,5 cm	550 cc	12,1 cm	6,9 cm	350-3460	
500 cc	12,8 cm	5,6 cm	600 cc	12,4 cm	7,1 cm	350-3500	351-3500SZ
560 cc	13,4 cm	5,7 cm	675 cc	13,1 cm	7,3 cm	350-3560	
630 cc	13,8 cm	5,9 cm	750 cc	13,4 cm	7,4 cm	350-3630	351-3630SZ

[†]Single Use Only

Saline Breast Implants – Contoured

Siltex™ Contour Profile® Moderate



Volume	Width	Height	Projection	Catalog #
175 + 25 cc	10,2 cm	8,5 cm	4,3 cm	354-2910
225 + 25 cc	11,2 cm	9,4 cm	4,5 cm	354-2911
275 + 25 cc	12,2 cm	10,3 cm	4,5 cm	354-2912
350 + 50 cc	13,1 cm	11,0 cm	4,7 cm	354-2913
425 + 50 cc	13,8 cm	11,6 cm	5,2 cm	354-2914
525 + 50 cc	14,9 cm	12,5 cm	5,6 cm	354-2915

Siltex™ Contour Profile® High

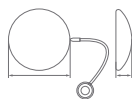


Volume	Width	Height	Projection	Catalog #	Sterile Saline Sizer [†]
275 + 25 cc	11,5 cm	9,5 cm	5,1 cm	354-2711	351-0711SZ
350 + 50 cc	12,3 cm	10,5 cm	5,3 cm	354-2712	351-0712SZ
450 + 50 cc	13,2 cm	11,0 cm	6,1 cm	354-2713	351-0713SZ
550 + 50 cc	14,0 cm	11,9 cm	6,4 cm	354-2714	351-0714SZ
650 + 75 cc	15,0 cm	12,7 cm	6,6 cm	354-2715	351-0715SZ

[†]Single Use Only

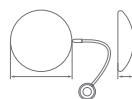
Spectrum® Adjustable Saline Breast Implants

Siltex™ Round Spectrum®



Temp. Vol.	Min. Vol.	Final Min. Vol.	Min. Diam.	Min. Proj.	Final Max. Vol.	Max. Diam.	Max. Proj.	Catalog #
125 cc	105 cc	125 cc	9,4 cm	3,0 cm	150 cc	9,2 cm	3,5 cm	354-2410M
175 cc	150 cc	175 cc	10,5 cm	3,1 cm	210 cc	10,4 cm	3,9 cm	354-2420M
225 cc	190 cc	225 cc	11,3 cm	3,3 cm	270 cc	11,1 cm	4,2 cm	354-2430M
275 cc	235 cc	275 cc	12,0 cm	3,6 cm	330 cc	11,4 cm	4,4 cm	354-2440M
325 cc	275 cc	325 cc	12,9 cm	3,7 cm	390 cc	12,6 cm	4,5 cm	354-2450M
375 cc	320 cc	375 cc	13,4 cm	3,9 cm	450 cc	13,1 cm	4,8 cm	354-2460M
425 cc	360 cc	425 cc	14,0 cm	4,2 cm	510 cc	13,6 cm	5,0 cm	354-2470M
475 cc	400 cc	475 cc	14,5 cm	4,5 cm	570 cc	14,2 cm	5,7 cm	354-2480M

Smooth Round Spectrum®



Temp. Vol.	Min. Vol.	Final Min. Vol.	Min. Diam.	Min. Proj.	Final Max. Vol.	Max. Diam.	Max. Proj.	Catalog #
125 cc	105 cc	125 cc	9,4 cm	2,7 cm	150 cc	9,3 cm	3,2 cm	350-1410
175 cc	150 cc	175 cc	10,3 cm	3,1 cm	210 cc	10,2 cm	3,8 cm	350-1420
225 cc	190 cc	225 cc	10,8 cm	3,5 cm	270 cc	10,9 cm	4,3 cm	350-1430
275 cc	230 cc	275 cc	11,6 cm	3,8 cm	330 cc	11,5 cm	4,6 cm	350-1440
325 cc	275 cc	325 cc	12,4 cm	4,0 cm	390 cc	12,1 cm	4,9 cm	350-1450
375 cc	320 cc	375 cc	13,5 cm	4,1 cm	450 cc	13,0 cm	4,9 cm	350-1460
425 cc	360 cc	425 cc	14,0 cm	4,2 cm	510 cc	13,7 cm	4,8 cm	350-1470
475 cc	405 cc	475 cc	14,3 cm	4,4 cm	570 cc	13,8 cm	5,4 cm	350-1480
525 cc	450 cc	525 cc	15,0 cm	4,4 cm	630 cc	14,4 cm	5,6 cm	350-1485
575 cc	490 cc	575 cc	14,7 cm	4,8 cm	690 cc	14,2 cm	6,0 cm	350-1490

Siltex™ Contour Profile® Spectrum®



Temp. Vol.	Min. Vol.	Final Min. Vol.	Min. Width	Min. Height	Min. Proj.	Final Max. Vol.	Max. Width	Max. Height	Max. Proj.	Cat. #
275 cc	235 cc	275 cc	11,5 cm	9,5 cm	5,1 cm	330 cc	11,1 cm	9,4 cm	6,3 cm	354-2511
350 cc	300 cc	350 cc	12,3 cm	10,5 cm	5,3 cm	420 cc	11,9 cm	10,1 cm	6,9 cm	354-2512
450 cc	380 cc	450 cc	13,2 cm	11,0 cm	6,1 cm	540 cc	12,7 cm	11,0 cm	7,5 cm	354-2513
550 cc	470 cc	550 cc	14,0 cm	11,9 cm	6,4 cm	660 cc	13,7 cm	11,9 cm	7,9 cm	354-2514
650 cc	550 cc	650 cc	15,0 cm	12,7 cm	6,6 cm	780 cc	14,5 cm	12,5 cm	8,2 cm	354-2515

Sterile Saline Sizers†

Round Moderate Profile



NOMINAL FILL			MAXIMUM FILL			Catalog #
Volume	Diameter	Projection	Volume	Diameter	Projection	
125 cc	9,5 cm	3,0 cm	150 cc	9,1 cm	3,4 cm	351-125SZ
175 cc	10,6 cm	3,3 cm	200 cc	10,0 cm	3,9 cm	351-175SZ
225 cc	11,5 cm	3,5 cm	250 cc	10,9 cm	4,0 cm	351-225SZ
275 cc	12,3 cm	3,7 cm	300 cc	11,7 cm	4,2 cm	351-275SZ
325 cc	13,0 cm	3,8 cm	375 cc	12,3 cm	4,5 cm	351-325SZ
375 cc	13,6 cm	4,0 cm	425 cc	12,8 cm	4,8 cm	351-375SZ
425 cc	14,2 cm	4,1 cm	475 cc	13,5 cm	4,9 cm	351-425SZ
475 cc	14,8 cm	4,2 cm	525 cc	14,2 cm	4,9 cm	351-475SZ

Round Moderate *Plus* Profile

NOMINAL FILL			MAXIMUM FILL			Catalog #
Volume	Diameter	Projection	Volume	Diameter	Projection	
175 cc	9,5 cm	3,5 cm	210 cc	9,3 cm	4,2 cm	351-2175SZ
200 cc	10,0 cm	3,7 cm	240 cc	9,7 cm	4,4 cm	351-2200SZ
225 cc	10,4 cm	3,8 cm	270 cc	10,1 cm	4,6 cm	351-2225SZ
250 cc	10,8 cm	4,0 cm	300 cc	10,5 cm	4,7 cm	351-2250SZ
275 cc	11,0 cm	4,1 cm	330 cc	10,8 cm	4,9 cm	351-2275SZ
300 cc	11,5 cm	4,3 cm	360 cc	11,2 cm	5,0 cm	351-2300SZ
325 cc	11,9 cm	4,4 cm	390 cc	11,5 cm	5,2 cm	351-2325SZ
350 cc	12,1 cm	4,5 cm	420 cc	11,7 cm	5,3 cm	351-2350SZ
375 cc	12,3 cm	4,6 cm	450 cc	12,0 cm	5,4 cm	351-2375SZ
400 cc	12,6 cm	4,7 cm	480 cc	12,3 cm	5,5 cm	351-2400SZ
425 cc	12,9 cm	4,8 cm	510 cc	12,5 cm	5,6 cm	351-2425SZ
450 cc	13,0 cm	4,9 cm	540 cc	12,8 cm	5,7 cm	351-2450SZ
475 cc	13,3 cm	5,0 cm	570 cc	13,0 cm	5,8 cm	351-2475SZ
500 cc	13,6 cm	5,1 cm	600 cc	13,2 cm	5,9 cm	351-2500SZ
550 cc	14,0 cm	5,3 cm	660 cc	13,7 cm	6,1 cm	351-2550SZ
600 cc	14,5 cm	5,5 cm	720 cc	14,1 cm	6,3 cm	351-2600SZ
650 cc	14,8 cm	5,6 cm	780 cc	14,4 cm	6,5 cm	351-2650SZ
700 cc	15,2 cm	5,8 cm	840 cc	14,8 cm	6,6 cm	351-2700SZ
750 cc	15,6 cm	5,9 cm	900 cc	15,1 cm	6,8 cm	351-2750SZ
800 cc	16,1 cm	6,0 cm	960 cc	15,5 cm	7,0 cm	351-2800SZ

†Single Use Only

Sterile Saline Sizers† CONT'D

Round High Profile



NOMINAL FILL			MAXIMUM FILL			Catalog #
Volume	Diameter	Projection	Volume	Diameter	Projection	
190 cc	9,3 cm	4,1 cm	225 cc	9,1 cm	5,1 cm	351-3190SZ
230 cc	10,0 cm	4,3 cm	275 cc	9,8 cm	5,5 cm	351-3230SZ
270 cc	10,4 cm	4,6 cm	325 cc	10,2 cm	5,8 cm	351-3270SZ
290 cc	10,8 cm	4,7 cm	350 cc	10,5 cm	5,9 cm	351-3290SZ
310 cc	11,0 cm	4,8 cm	375 cc	10,7 cm	6,0 cm	351-3310SZ
330 cc	11,3 cm	4,8 cm	400 cc	11,0 cm	6,2 cm	351-3330SZ
380 cc	11,7 cm	5,2 cm	450 cc	11,4 cm	6,4 cm	351-3380SZ
420 cc	12,0 cm	5,4 cm	500 cc	11,7 cm	6,7 cm	351-3420SZ
500 cc	12,8 cm	5,6 cm	600 cc	12,4 cm	7,1 cm	351-3500SZ
630 cc	13,8 cm	5,9 cm	750 cc	13,4 cm	7,4 cm	351-3630SZ

Contour Profile® High



Volume	Width	Height	Projection	Catalog #
275 + 25 cc	11,5 cm	9,5 cm	5,1 cm	351-0711SZ
350 + 50 cc	12,3 cm	10,5 cm	5,3 cm	351-0712SZ
450 + 50 cc	13,2 cm	11,0 cm	6,1 cm	351-0713SZ
550 + 50 cc	14,0 cm	11,9 cm	6,4 cm	351-0714SZ
650 + 75 cc	15,0 cm	12,7 cm	6,6 cm	351-0715SZ

Contour Profile® Breast Tissue Expanders

Siltex™ Low Height, Style 6100*



Volume	Width	Height	Projection	Catalog #
250 cc	11,4 cm	8,1 cm	6,1 cm	354-6111
350 cc	12,7 cm	9,4 cm	6,5 cm	354-6112
450 cc	14,0 cm	10,2 cm	7,1 cm	354-6113
550 cc	15,0 cm	10,9 cm	7,4 cm	354-6114
650 cc	15,7 cm	11,2 cm	7,9 cm	354-6115
750 cc	16,5 cm	11,9 cm	8,1 cm	354-6116

Siltex™ Medium Height, Style 6200*



Volume	Width	Height	Projection	Catalog #
275 cc	10,7 cm	9,3 cm	6,2 cm	354-6211
350 cc	11,7 cm	10,0 cm	6,6 cm	354-6212
450 cc	12,7 cm	10,8 cm	7,0 cm	354-6213
550 cc	13,5 cm	11,7 cm	7,4 cm	354-6214
650 cc	14,6 cm	12,6 cm	7,6 cm	354-6215
800 cc	15,6 cm	13,3 cm	8,0 cm	354-6216

Siltex™ Tall Height, Style 6300*



Volume	Width	Height	Projection	Catalog #
250 cc	10,1 cm	10,7 cm	5,6 cm	354-6311
350 cc	11,3 cm	11,8 cm	6,0 cm	354-6312
450 cc	12,3 cm	12,9 cm	6,5 cm	354-6313
550 cc	13,2 cm	13,8 cm	6,9 cm	354-6314
650 cc	14,0 cm	14,6 cm	7,3 cm	354-6315
750 cc	14,6 cm	15,3 cm	7,6 cm	354-6316
850 cc	15,4 cm	15,9 cm	7,9 cm	354-6317

*Includes Centerscope® magnetic detection device

PLEASE NOTE: Contour Profile® Breast Tissue Expanders are not MRI compatible.

Other Tissue Expanders

Smooth Round



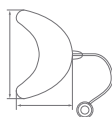
Volume	Diam.	Projection	Catalog #
400 cc	11,3 cm	5,9 cm	350-4305M
550 cc	13,4 cm	5,8 cm	350-4307M
700 cc	14,6 cm	6,7 cm	350-4304M
850 cc	15,0 cm	7,2 cm	350-4308M
1000 cc	15,5 cm	7,8 cm	350-4306M

Smooth Elliptical



Volume	Length	Width	Nominal Projection	TEMPORARY OVEREXPANSION		Catalog #
				Projection	Max. Vol.	
25 cc	6,0 cm	4,0 cm	2,3 cm	4,5 cm	75 cc	350-5301M
50 cc	8,0 cm	5,0 cm	2,5 cm	5,3 cm	150 cc	350-5302M
75 cc	10,0 cm	6,0 cm	2,1 cm	6,0 cm	225 cc	350-5303M
150 cc	12,0 cm	7,0 cm	3,2 cm	7,2 cm	450 cc	350-5304M
250 cc	14,0 cm	8,0 cm	4,5 cm	9,0 cm	750 cc	350-5305M
125 cc	15,0 cm	5,0 cm	3,3 cm	6,5 cm	375 cc	350-5306M

Smooth Crescent



Volume	Length	Width	Projection	Catalog #
50 cc	9,0 cm	5,7 cm	2,7 cm	350-4312M
100 cc	11,0 cm	6,9 cm	3,7 cm	350-4313M
200 cc	14,6 cm	7,5 cm	4,3 cm	350-4314M
300 cc	16,5 cm	10,3 cm	4,7 cm	350-4315M
400 cc	18,2 cm	11,4 cm	5,2 cm	350-4316M
500 cc	19,6 cm	12,4 cm	5,5 cm	350-4317M

Smooth Rectangle



Volume	Length	Width	Projection	Catalog #
50 cc	6,9 cm	3,2 cm	3,2 cm	350-4309M
100 cc	6,6 cm	5,1 cm	5,6 cm	350-4301M
250 cc	10,4 cm	7,3 cm	5,6 cm	350-4302M
400 cc	10,6 cm	9,3 cm	6,6 cm	350-4303M
550 cc	13,7 cm	7,1 cm	7,7 cm	350-4310M
700 cc	15,0 cm	8,0 cm	7,9 cm	350-4311M

Accessories

Aseptic Transfer System*

Description

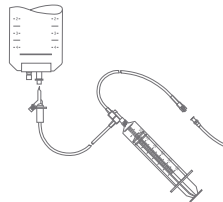
*Aseptic Transfer System

Catalog #

350-8400

Carton contains 4 sterile kits, each kit includes:

- 60 cc syringe (sterile, disposable)
- Piercing spike
- 48" tubing (saline container to syringe)
- Dual check valve
- 10" tubing (syringe to implant fill tube)
- Luer connector (attaches to implant fill tube)



Injection Port Detector

Description

Centerscope®

Catalog #

350-4402

Injection Dome

Description

Dome Pack Set

Catalog #

350-DOMPK

Can be used with Spectra® Adjustable Gel Implant.

*Not available for sale in the European Union

Aspiration Products

Systems & Accessories

LYSONIX®

Description	Catalog #
LySonix® 3000 Ultrasonic System with Pulseselect™	3000S
LySonix® 3000 Ultrasonic System with Pulseselect™ Micro System	3000SMS
LySonix® 3000 Generator with Pulseselect™	3000G
LySonix® 3000 Handpiece with Cable	3000SHP
LySonix® 3000 Standard Micro Handpiece with Cable	3000MHP
Micro Wrench Set	3000M-32
Cleaning Brushes (10 Each, 2 Sizes)	2010-20
Probe Tray	2010-30
Brush Set for Probes	2010-31
Standard Wrench Set	2010-32
Footswitch with Cable (For Generator, Irrigator, Aspirator)	2010-50
10' Power Cord (For Generator, Irrigator, Aspirator)	2010-55
Transportation Case	2010-60
FineLine™, Solid, Micro Cannula 2mm 10cm	3000M-210BTS
FineLine™, Solid, Micro Cannula 2mm 20cm	3000M-220BTS
FineLine™, Hollow, Micro Cannula 3mm 10cm	3000M-310BTH
FineLine™, Hollow, Micro Cannula 3.5mm 20cm	3000M-3520BTH
Bullet Tip, Solid, Probe 4mm 20cm	5510-420
Bullet Tip, Solid, Probe 4mm 30cm	5510-430
Bullet Tip, Solid, Probe 5mm 30cm	5510-530
Round Tip, Hollow, Probe 4mm 30cm	5610-430
Bullet Tip, Hollow, Probe 5mm 30cm	5610-530
Golf Tip, Hollow, Probe 4mm 20cm	5620-420
Golf Tip, Hollow, Probe 5mm 30cm	5620-530
Ultra Sonic Probes Sleeves (for 5x30 Probes)	5050-530-6

Aspiration Products CONT'D

Systems & Accessories CONT'D

PSI-TEC III™

Description	Catalog #
PSI-TEC III™ Aspirator (Includes Aspirator, I.V. Pole and Bar System with Bag Hangers, Dual Canister Holder, (2) Reusable Canisters, (5) PSI-TEC Total Aspiration Kits, Power Cord, Foot Pedal)	PT-ASP-III-110
*Accelerator II Aspirator (110 Volt)	ASP II
PSI-TEC III™ Rail	PT-III-RAIL
PSI-TEC III™ Tray for IV Pole with Clamp	PT-III-SHELF
PSI-TEC III™ Clip for Rail (Canister Bracket)	PT-III-CLIP
Reusable 2000cc Canister	CN2000-FT
Hollow Screw & Washer for CN2000-FT	SCREW-FT
Flexible "T" Fitting with 3/8" Tubing Connectors	CN-FLEX-T
*Mounting Bracket for Accumeasure Canister	CN-MOUNT
Wire Basket for IP™ Canister	AB43426
PSI-TEC III™ Dual Canister Basket Holder	AB43429

*Not available for sale in the European Union

Cannula Products

One-Piece Cannulae (reusable)

ACCELERATOR III™

Catalog #	O.D.	Length
III215S	2 mm	15 cm
III226S	2 mm	26 cm
III315S	3 mm	15 cm
III326L	3 mm	26 cm
III326S	3 mm	26 cm
III332L	3 mm	32 cm
III336L	3 mm	36 cm
III415S	4 mm	15 cm
III426L	4 mm	26 cm
III432L	4 mm	32 cm
III436L	4 mm	36 cm
III515S	5 mm	15 cm
III526L	5 mm	26 cm
III532L	5 mm	32 cm
III536L	5 mm	36 cm
III626L	6 mm	26 cm
III632L	6 mm	32 cm

BECKER™

BEC326L	3 mm	26 cm
BEC426L	4 mm	26 cm
BEC432L	4 mm	32 cm
BEC526L	5 mm	26 cm

BECKER TEAR DROP™

BECTD326L	3 mm	26 cm
BECTD426L	4 mm	26 cm
BECTD432L	4 mm	32 cm
BECTD526L	5 mm	26 cm

CANDY CANE™

CCC326L	3 mm	26 cm
CCC332L	3 mm	32 cm
CCC426L	4 mm	26 cm
CCC432L	4 mm	32 cm
CCC526L	5 mm	26 cm

FOURNIER

FOU315S	3 mm	15 cm
FOU326L	3 mm	26 cm
FOU415S	4 mm	15 cm
FOU426L	4 mm	26 cm
FOU432L	4 mm	32 cm

GILLILAND™ ETCHING CANNULA

GEC320S	3 mm	20 cm
GEC420S	4 mm	20 cm

KEEL COBRA™

KC315S	3 mm	15 cm
KC326L	3 mm	26 cm
KC415S	4 mm	15 cm
KC426L	4 mm	26 cm
KC432L	4 mm	32 cm
KC526L	5 mm	26 cm

KEEL COBRA II™

KCII326L	3 mm	26 cm
KCII426L	4 mm	26 cm

KEEL COBRA II™ CONT'D

Catalog #	O.D.	Length
KCII432L	4 mm	32 cm
KCII526L	5 mm	26 cm
KCII532L	5 mm	32 cm

KEEL COBRA™ VENTED

KCII330L-V	3 mm	30 cm
KCII336L-V	3 mm	36 cm
KCII3.530L-V	3.5 mm	30 cm
KCII3.536L-V	3.5 mm	36 cm

LAS VEGAS™

LV315S	3 mm	15 cm
LV326L	3 mm	26 cm
LV415S	4 mm	15 cm
LV426L	4 mm	26 cm
LV432L	4 mm	32 cm

MERCEDES

MER215S	2 mm	15 cm
MER226S	2 mm	26 cm
MER315S	3 mm	15 cm
MER326S	3 mm	26 cm
MER332L	3 mm	32 cm
MER336L	3 mm	36 cm
MER415S	4 mm	15 cm
MER426L	4 mm	26 cm
MER432L	4 mm	32 cm
MER436L	4 mm	36 cm
MER515S	5 mm	15 cm
MER526L	5 mm	26 cm
MER532L	5 mm	32 cm
MER536L	5 mm	36 cm
MER626L	6 mm	26 cm
MER632L	6 mm	32 cm

MLADICK™

MLCON-315S	3 mm	15 cm
MLCON-326L	3 mm	26 cm
MLCON-415S	4 mm	15 cm
MLCON-426L	4 mm	26 cm
MLCVX-315S	3 mm	15 cm
MLCVX-326L	3 mm	26 cm
MLCVX-415S	4 mm	15 cm
MLCVX-426L	4 mm	26 cm

SPATULA

SPA215S	2 mm	15 cm
SPA315S	3 mm	15 cm
SPA415S	4 mm	15 cm
SPA515S	5 mm	15 cm
SPA615S	6 mm	15 cm

STANDARD

STD315S	3 mm	15 cm
STD326L	3 mm	26 cm
STD415S	4 mm	15 cm
STD426L	4 mm	26 cm

Cannula Products CONT'D

ARC™ Cannula Tips
for Two-Piece System (reusable)**ACCELERATOR III™**

Catalog #	O.D.	Length
III226-ARC	2 mm	26 cm
III326-ARC	3 mm	26 cm
III332-ARC	3 mm	32 cm
III336-ARC	3 mm	36 cm
III426-ARC	4 mm	26 cm
III432-ARC	4 mm	32 cm
III526-ARC	5 mm	26 cm
III532-ARC	5 mm	32 cm

BECKER TEAR DROP™

BECTD326-ARC	3 mm	26 cm
BECTD426-ARC	4 mm	26 cm

CANDY CANE™

CCC426-ARC	4 mm	26 cm
CCC432-ARC	4 mm	32 cm
CCC526-ARC	5 mm	26 cm
CCC532-ARC	5 mm	32 cm

KEEL COBRA II™

Catalog #	O.D.	Length
KCII326-ARC	3 mm	26 cm
KCII426-ARC	4 mm	26 cm
KCII432-ARC	4 mm	32 cm
KCII526-ARC	5 mm	26 cm
KCII532-ARC	5 mm	32 cm

MERCEDES

MER226-ARC	2 mm	26 cm
MER326-ARC	3 mm	26 cm
MER332-ARC	3 mm	32 cm
MER336-ARC	3 mm	36 cm
MER426-ARC	4 mm	26 cm
MER432-ARC	4 mm	32 cm
MER526-ARC	5 mm	26 cm
MER532-ARC	5 mm	32 cm

Toomey Tip Cannulae (reusable)

ACCELERATOR III™

Catalog #	O.D.	Length
III215-SYR	2 mm	15 cm
III226-SYR	2 mm	26 cm
III315-SYR	3 mm	15 cm
III326-SYR	3 mm	26 cm
III332-SYR	3 mm	32 cm
III415-SYR	4 mm	15 cm
III426-SYR	4 mm	26 cm
III432-SYR	4 mm	32 cm
III436-SYR	4 mm	36 cm
III526-SYR	5 mm	26 cm
III532-SYR	5 mm	32 cm
III626-SYR	6 mm	26 cm
III632-SYR	6 mm	32 cm

BECKER™

BEC426-SYR	4 mm	26 cm
------------	------	-------

FOURNIER

FOU426-SYR	4 mm	26 cm
------------	------	-------

LAS VEGAS™

LV215-SYR	2 mm	15 cm
LV315-SYR	3 mm	15 cm
LV326-SYR	3 mm	26 cm
LV426-SYR	4 mm	26 cm
LV432-SYR	4 mm	32 cm

KEEL COBRA™

KC426-SYR	4 mm	26 cm
-----------	------	-------

KEEL COBRA II™

Catalog #	O.D.	Length
KCII426-SYR	4 mm	26 cm
KCII526-SYR	5 mm	26 cm

MERCEDES

MER215-SYR	2 mm	15 cm
MER226-SYR	2 mm	26 cm
MER315-SYR	3 mm	15 cm
MER326-SYR	3 mm	26 cm
MER332-SYR	3 mm	32 cm
MER336-SYR	3 mm	36 cm
MER415-SYR	4 mm	15 cm
MER426-SYR	4 mm	26 cm
MER432-SYR	4 mm	32 cm
MER436-SYR	4 mm	36 cm
MER526-SYR	5 mm	26 cm
MER532-SYR	5 mm	32 cm
MER626-SYR	6 mm	26 cm
MER632-SYR	6 mm	32 cm

SPATULA

SPA215-SYR	2 mm	15 cm
SPA315-SYR	3 mm	15 cm
SPA415-SYR	4 mm	15 cm
SPA515-SYR	5 mm	15 cm

STANDARD

STD315-SYR	3 mm	15 cm
STD415-SYR	4 mm	15 cm
STD426-SYR	4 mm	26 cm

Cannula Products CONT'D

Luer Lock Cannula Series

Description	Diameter	Length	Catalog #
Accelerator III™ Aspiration Cannula LL	3 mm	23 cm	BNIII323
Accelerator III™ Aspiration Cannula LL	3 mm	30 cm	BNIII330
Mercedes Aspiration Cannula LL	2 mm	23 cm	BNMER223
Mercedes Aspiration Cannula LL	3 mm	23 cm	BNMER323
Mercedes Aspiration Cannula LL	3 mm	30 cm	BNMER330
Sattler™ Aspiration Cannula LL	2 mm	23 cm	BNSAT223
Sattler™ Aspiration Cannula LL	3 mm	23 cm	BNSAT323
Sattler™ Aspiration Cannula LL	3 mm	30 cm	BNSAT330
Luer Lock Aspiration Handle			MICRO-HAN

Luer Lock Micro-Cannula Series

Description	Diameter	Length	Catalog #
Accelerator III™ Aspiration Cannula	3 mm	9 cm	BNIII
Accelerator III™ Aspiration Cannula	3 mm	15 cm	BNIII315
Accelerator "Touch Up" Aspiration Cannula	2 mm	9 cm	BNTU-14
Accelerator "Touch Up" Aspiration Cannula	1,6 mm	9 cm	BNTU-16
Becker™ Aspiration Cannula	3 mm	9 cm	BNBEC
Mercedes Aspiration Cannula	3 mm	9 cm	BNMER
Mercedes Aspiration Cannula	2 mm	9 cm	BNMER-14
Mercedes Aspiration Cannula	2 mm	15 cm	BNMER215
Mercedes Aspiration Cannula	3 mm	15 cm	BNMER315
Spatula Cannula	2 mm	9 cm	BNSP33
Spatula Cannula	2 mm	15 cm	BNSP36
Spatula Cannula	3 mm	9 cm	BNSP43
Spatula Cannula	3 mm	15 cm	BNSP46
Standard Aspiration Cannula	3 mm	9 cm	BNSTD
Standard Aspiration Cannula	2 mm	9 cm	BNSTD-14
Snug Hub Wrench			NWRENCH
Luer Lock Needle Adapter for 60 cc Toomey Syringes			TOM-LLN
Luer Lock to Luer Lock Transfer System		12 ga	LL-LL 12

Cannula Accessories

Toomey Syringes, Locks, Transfers, Accessories

Description	Quantity	Catalog #
Toomey Power Aspiration Adapter Handle	EA	TOM-HAN
60 cc Toomey to Luer Lock Syringe	EA	TOM-LLS
60 cc Toomey to Luer Lock Needle	EA	TOM-LLN
Toomey Syringe Cap		60cc CAP
Reusable 50 cc Snapper (for Disposable Syringe)	EA	SNAP 50cc
Reusable 35 cc Snapper (for Disposable Syringe)	EA	SNAP 35cc
Reusable 20 cc Snapper (for Disposable Syringe)	EA	SNAP 20cc
Reusable 10 cc Snapper (for Disposable Syringe)	EA	SNAP 10cc
Reusable Twist Lock for Monoject 60 cc Disposable Syringe		SNAP TWIST
*60cc Monoject® Toomey Syringe - Sterile	20/Box	560S-T

ARC™ Reciprocating Cannula

ARC™ HANDLES

Small Threaded Handle	ARC-HAN-S
Large Threaded Handle	ARC-HAN-L

Dissectors and Underminers

CLOSED NECK DISSECTOR

Description	Cannula Diam.	Tip Diam.	Shaft Length	Catalog #
Closed Neck Dissector	3 mm	4 mm	15 cm	CND-S
Closed Neck Dissector	4 mm	6 mm	15 cm	CND-M
Closed Neck Dissector	6 mm	8 mm	15 cm	CND-L

CR™ DISSECTOR

CR™ Dissector with Small Handle	2 mm	4 mm	26 cm	CR 2-26
CR™ Dissector with 5/8" Aluminum	4 mm	6 mm	26 cm	CR 4-26

CRC™ CANNULA/DISSECTOR

CR™ Cannula with Infiltration Port	3 mm	5 mm	15 cm	CRC315HLLT
CR™ Cannula with Infiltration Port	3 mm	5 mm	26 cm	CRC326HLLT
CR™ Cannula with Infiltration Port	4 mm	6 mm	15 cm	CRC415HLLT
CR™ Cannula with Infiltration Port	4 mm	6 mm	26 cm	CRC426HLLT

UM-14™ DISSECTOR/UNDERMINER

Injection Cannula with Flat Stiletto Blade		14 ga	UM-14
--	--	-------	--------------

THE WILKINSON RHYTISECTOR™

Wilkinson Rhytisector™, Straight	5 mm	13,5 cm	UM-TS
Wilkinson Rhytisector™, Curved	5 mm	13,5 cm	UM-TC

THE LOCKWOOD™ UNDERMINER

Lockwood™ Underminer, 3 cm lift		38 cm	LU383
Lockwood™ Underminer, 3 cm lift		45 cm	LU453

*Not available for sale in the European Union

Infiltration Systems

Infiltrators

Description	Catalog #
Peristaltic Infiltration/Irrigation Pump	EZ-PUMP
*PSI-TEC III™ Infiltrator	PT-PINF-III

Infiltration Handles

Description	Quantity	Catalog #
Hunstad™ Infiltration Handle		HUN-HAN
Hunstad™ Infiltration Handle with Spring		HUN-HAN-S
Hunstad™ Spring Handle Piston		HUN-SPISTON
Hunstad™ Handle New Piston		HUN-NPISTON
Hunstad™ Handle Ring Kit		HUN-N-RINGS
Hunstad™ Spring Loaded “O” Ring Replacement	2/ea	HUN-S-O-RING
Hunstad™ “O” Ring Insertion Tool		HUN-TOOL
“O” Ring Lubricant (Bottle)		HUN-LUBE
Infiltration Handle with Luer Lock Fitting		INF-HAN-L

Infiltration Cannulae

Description	Diameter	Length	Catalog #
LAMIS™	12 ga	15 cm	BN1206
LAMIS™	12 ga	30 cm	BN1230
LAMIS™	12 ga	35 cm	BN1235
LAMIS™	12 ga	40 cm	BN1240
LAMIS™	14 ga	15 cm	BN1406
LAMIS™	14 ga	23 cm	BN1423
LAMIS™	14 ga	30 cm	BN1430
LAMIS™	16 ga	15 cm	BN1606
LAMIS™ Spatula	12 ga	15 cm	BNSP1206
LAMIS™ Spatula	14 ga	15 cm	BNSP1406
Hunstad™	12 ga	23 cm	BN1223H
Hunstad™	12 ga	30 cm	BN1230H
Hunstad™	14 ga	35 cm	BN1435H
Hunstad™	16 ga	20 cm	BN1620H
Sieman Infiltration	12 ga	30 cm	BNSP1230-C
Sieman Infiltration	14 ga	12 cm	BNSP1412-C
Needle Wrench			NWRENCH

*Not available for sale in the European Union

Microinjection

Coleman™ Microinjection Products

Description	Size	Catalog#
Aspiration Cannula	15 cm	COL-ASPI
Coleman™ Curved Aspiration Cannula	15cm	COL-ASPIC
Aspiration Cannula, Body	23 cm	COL-ASPB
Curved Aspiration Cannula, Body	23cm	COL-ASPBC
Coleman™ Infiltration Cannula Style I	7 cm	COL-I7
Coleman™ Infiltration Cannula Style I	9 cm	COL-I9
Coleman™ Infiltration Cannula Style I - for Body	14 ga x 15 cm	COL-I14B
Coleman™ Infiltration Cannula Style I - for Body	16 ga x 15 cm	COL-I16B
Coleman™ Curved Infiltration Cannula Style I - for Body	16 ga x 15 cm	COL-I16BC
Coleman™ Infiltration Cannula Style II	7 cm	COL-I17
Coleman™ Infiltration Cannula Style II	9 cm	COL-I19
Coleman™ Curved Infiltration Cannula Style II	7 cm	COL-I17C
Coleman™ “S” Infiltration Cannula Style II	9 cm	COL-I19S
Coleman™ Infiltration Cannula Style III	7 cm	COL-I117
Coleman™ Infiltration Cannula Style III	9 cm	COL-I119
Coleman™ Concave Infiltration Cannula Style I	9 cm	COL-I9CC
Coleman™ Concave Infiltration Cannula Style II	9 cm	COL-I19CC
Coleman™ Concave Infiltration Cannula Style III	9 cm	COL-I119CC
Coleman™ Convex Infiltration Cannula Style I	9 cm	COL-I9CV
Coleman™ Convex Infiltration Cannula Style II	9 cm	COL-I19CV
Coleman™ Convex Infiltration Cannula Style III	9 cm	COL-I119CV
Coleman™ “V” Dissector	7 cm	COL-V
Coleman™ “V” Dissector	14 ga x 9 cm	COL-V149
Coleman™ “V” Dissector	12 ga x 15 cm	COL-V12B
Coleman™ “V” Dissector	14 ga x 15 cm	COL-V14B
Coleman™ Stylet		COL-STYLET
Coleman™ Stylet Mini I Kit	19 ga x 5 cm	COL-MINI I-K
Coleman™ Mini I Stylet		COL-MINI I-S
Coleman™ Stylet Mini II Kit	20 ga x 3,175 cm	COL-MINI II-K
Coleman™ Mini II Stylet		COL-MINI II-S
Coleman™ Curved Irrigation Cannula	16 ga x 15 cm	COL-I223C

Coleman™ Microinjection Accesories

Coleman™ Adapters	10/Box	COL-ANADT
Autoclavable Syringe Rack		COL-RACK
*Centrifuge, Medilite, 110 V		2580
Centrifuge, Medilite, 220 V		2581
Extra Tube for Centrifuge		MS-TUBE
Extra Rotor for Centrifuge		MS-ROTOR
Coleman™ Luer Lock Caps, Sterile – 6/Pkg	25 Pkg/Box	COL-LLCAP
*1 cc BD Luer Lock Syringe, Sterile	100/Box	B9628
*10 cc BD Luer Lock Syringe, Sterile	100/Box	B9604

*Not available for sale in the European Union

Microinjection CONT'D

Microinfiltration Instrumentation

Description	Size	Catalog #
Luer Lock to Luer Lock Transfer System	12 cm	LL-LL12
LL Handle Adapter		MICRO-HAN
*80cc Lukens® Trap, Sterile	10/Box	CCTRAP-80
Vida™ Filter	10/Box	ST-10
Vida™ Filter	10/Box	ST-20
Vida™ Filter	10/Box	ST-60
Vida™ Microinjector Luer Lock Cannula	16 ga x 6 cm	V16-6
Vida™ Microinjector Luer Lock Cannula	16 ga x 8 cm	V16-8
Vida™ Microinjector Luer Lock Cannula	16 ga x 10 cm	V16-10
Vida™ Microinjector Luer Lock Cannula	16 ga x 12 cm	V16-12
Vida™ Microinjector Luer Lock Cannula	16 ga x 14 cm	V16-14
Vida™ Microinjector Luer Lock Cannula	17 ga x 5 cm	V17-5
Vida™ Microinjector Luer Lock Cannula	17 ga x 7 cm	V17-7
Vida™ Microinjector Luer Lock Flattened Cannula	16 ga x 6 cm	V16-6F
Vida™ Microinjector Luer Lock Flattened Cannula	16 ga x 8 cm	V16-8F
Vida™ Microinjector Luer Lock Nasal Cannula	16 ga x 6 cm	V16-6N
Vida™ Microinjector Luer Lock Butterfly Cannula	12 ga x 12 cm	VB12-12
Vida™ Microinjector Luer Lock Butterfly Cannula	12 ga x 15 cm	VB12-15
Vida™ Microinjector Luer Lock Butterfly Flattened Cannula	14 ga x 7 cm	VB14-7F
Vida™ Microinjector Luer Lock Butterfly Flattened Cannula	14 ga x 9 cm	VB14-9F
Vida™ Microinjector Luer Lock Butterfly Flattened Cannula	14 ga x 12 cm	VB14-12F
Vida™ Microinjector Luer Lock Butterfly Flattened Cannula	14 ga x 15 cm	VB14-15F
Donofrio™ Infiltration Cannula	18 ga x 6 cm	COL/DONO-16
Donofrio™ Stylet		COLO/DONO-STYLET
Roberts Infiltration Cannula	14 ga x 20 cm	COL/ROB-114B
60cc Syringe Rack		ROB-RACK

*Not available for sale in the European Union

Disposables

Description	Catalog #
PSI-TEC Absolute Filters,10/Box	PT-100038
Accelerator™ Absolute Filter, 6/Box	B100038
PSI-TEC Connecting Tubes, Sterile, 10/Box (5 Short, 5 Long)	PT-5558-F
Filter Connecting Tubes, Sterile, 10/Box (5 Short, 5 Long)	B5558-F
(5) Total Aspiration Protection Kits - IP	TAP KIT
(5) Total Aspiration Protection Kits for PSI-TEC System	PT-TAP KIT
Disposable 2000cc Liner	CNLINER
*Accumeasure 250cc Canister	CN250CC
1,5 L Reusable Collection Canister	A-1320
1,5 L Disposable Liner and Lid	A-1330
*LAMIS™ Disposable Syringe	LAM-10-R

Tubing

Description	Pump	Quantity	Catalog #
Infiltration Tubing, 13', Sterile	EZ Pump™	10/Box	CG-INF-T
CG Infiltration/Irrigation "Y" Tubing, Sterile	EZ Pump™	10/Box	CG-UT
Tubing, Sterile	PSI-TEC III™ Syringe Pump	10/Box	PT-INF-T
PSI-TEC III™ Tubing, 12', Sterile	PSI-TEC III™	10/Box	PT-5558
LAMIS™ "Y" Tubing, Sterile	Big Bag 3000	10/Box	LAM-Y
LAMIS™ Tubing, 9" Sterile	Big Bag 3000	10/Box	LAM-TUBING
Lysonix® Infiltration Tubing Set	Lysonix® 3000	10/Box	5120-10
8' Hi-Vac™ Tubing, Sterile		10/Box	B-5558
Autofuse Tubing, Sterile	PSI-TEC III™	10/Box	AFTU-DS

Cannula Brushes

Description	Diameter	Length	Quantity	Catalog #
Facial Cannula Brush	0,045"	48 cm	20/Box	B8810
Facial Cannula Brush	0,072"	48 cm	20/Box	B8820
Disposable Cannula Brush	5/32"	51 cm	20/Box	B8830
Disposable Cannula Brush	5/16"	56 cm	20/Box	B8850
LySonix UAL Cannula & Handpiece Brushes	(2 Sm, 2 Lg)		4/Box	2010-31

*Not available for sale in the European Union

Miscellaneous Products

Scar Therapy

Description	Quantity	Catalog #
*ScarGuard® ScarCare 30 ml Bottle	Sleeve of 6	SG30
*ScarGuard® Lightener 30 ml Bottle	Sleeve of 6	SL30

Thermoplas Nasal Splint™

*Nasal Splint	10/Box	NS111-S
---------------	--------	----------------

TopiFoam™ Silicone-Gel Backed Adhesive Foam Pad

*30 Silicone-Gel Backed Adhesive Foam Pads (8" x 12" x 0,5"), Non-sterile, 3 Pads/Pouch	10 Pouch/Box	5710-30
---	--------------	----------------

Medi-Cubes™ Refreezable Ice Cubes

*Medi-Cubes™ Refreezable Ice Cubes, Nonsterile	30/Box	MC-30
--	--------	--------------

Wrap-it™ Eye Protection System

*50 Lenses		WI-LENS
*25 Frames		WI-FRAME

Undies

REGULAR STYLE

*Disposable Panties - Small	20/Box	B8400
*Disposable Panties - Medium	20/Box	B8420
*Disposable Panties - Large	20/Box	B8440
*Disposable Panties - Extra Large	20/Box	B8450

THONG STYLE

*Disposable Panties - Small	20/Box	B7400
*Disposable Panties - Medium	20/Box	B7420
*Disposable Panties - Large	20/Box	B7440

MEN'S STYLE

*Disposable Panties - Medium	20/Box	B9420
*Disposable Panties - Large	20/Box	B9440

*Not available for sale in the European Union

Compression Garments

Breast and Chest

Description	Size	Catalog #
Bra Vest with Cups, Short Style	32-44, A-DD	2-8008S
Bra Vest with Cups, Long Style	32-44, A-DD	2-8008L
Shaped Compression Vest	30-44	2-8002
Female Compression Vest	30-46	2-8014
Post-Augmentation Bra	32-44	2-8124
Reconstruction Sports Bra	32-52, B-D	2-8126 EL
Semi-Shaped Bra, Satin with Velcro® Straps	32-46	2-8126
Semi-Shaped Bra, White Cotton	32-46	2-8125
Semi-Shaped Bra, White Cotton with Velcro® Straps	32-46	2-8127
The Bandeau, Standard Design	32-42	2-8015
The Bandeau, Single-Strap Design	32-42	2-8016
The Bandeau, One Size Fits All, 3" Wide Band	ONE SIZE	2-8020
Arm Bandage Vest with Arms	CUSTOM	5-8030
Arm Bandage Bolero	S-XXL	5-8035

SIZING CHART VEST/BRA/BANDEAU

CHEST	
Inches	Centimeters
30	76.0
32	81.3
34	86.4
36	91.4
38	96.5
40	101.6
42	106.7
44	111.8
46	116.9
48*	121.9
50*	127.0
52*	132.1

custom sizing available

* These sizes only available for the
Reconstruction Sports Bra (2-8126 EL)

SIZING CHART ARM BANDAGE (BOLERO STYLE)

Size (inches)	Shoulder to Wrist	Mid-Upper Arm	Wrist
S	19 - 20	9 - 10	5
M	21 - 22	10 - 11	5.5
L	22 - 23	11 - 12	6
XL	23 - 24	12 - 13	6.5
XXL	24 - 25	13 - 14	7

custom sizing available

 **CAROMED®**
recover beautifully

Compression Garments CONT'D

Abdominal

Description	Size	Catalog #
White Unisex One Piece Wastbinder, 9"	XS-XXXL	3-8004-9
White Unisex One Piece Wastbinder, 12"	XS-XXXL	3-8004-12
White Unisex One Piece Wastbinder, 15"	XS-XXXL	3-8004-15
Black Unisex One Piece Wastbinder, 9"	XS-XXXL	3-8504-9
Black Unisex One Piece Wastbinder, 12"	XS-XXXL	3-8504-12
Black Unisex One Piece Wastbinder, 15"	XS-XXXL	3-8504-15
White Unisex Multi-Flap Waistbinder, 9"	XS-XXXL	3-8027-9
White Unisex Multi-Flap Waistbinder, 12"	XS-XXXL	3-8037-12
White Unisex Multi-Flap Waistbinder, 15"	XS-XXXL	3-8047-15
Black Unisex Multi-Flap Waistbinder, 9"	XS-XXXL	3-8527-9
Black Unisex Multi-Flap Waistbinder, 12"	XS-XXXL	3-8537-12
Black Unisex Multi-Flap Waistbinder, 15"	XS-XXXL	3-8547-15
Adjustable Abdominoplasty Garment	XS-XXL	3-8025
Female Abdominoplasty Garment	XS-XXL	3-8005

SIZING CHART WAISTBINDER

Size	WAIST	
	Inches	Centimeters
XS	22 - 24	55.9 - 61.0
S	26 - 28	66.0 - 71.1
M	30 - 36	76.2 - 91.4
L	38 - 42	96.5 - 106.7
XL	44 - 46	111.8 - 116.8
XXL	47 - 48	119.4 - 121.9
XXXL	50 - 51	127.0 - 129.5

custom sizing available

SIZING CHART ABDOMINOPLASTY GARMENT

Size	Inches		Centimeters	
	Hip	Waist	Hip	Waist
XS	30 - 32	20 - 22	76.2 - 81.3	50.8 - 55.9
S	33 - 34	23 - 24	83.8 - 86.4	58.4 - 61.0
M	35 - 36	25 - 26	88.9 - 91.4	63.5 - 66.0
L	37 - 38	27 - 28	94.0 - 96.5	68.6 - 71.1
XL	40 - 43	30 - 33	101.6 - 109.2	76.2 - 83.8
XXL	44 - 46	34 - 36	111.8 - 116.8	86.4 - 91.4

custom sizing available

Compression Garments CONT'D

Girdles

Description	Size	Catalog #
Powernet Capri Length Girdle	XS-XXXL	4-8000
Satin Capri Length Girdle	XS-XXXL	4-8500
Powernet Above-the-Knee Girdle	XS-XXXL	4-8012
Satin Above-the-Knee Girdle	XS-XXXL	4-8512
Powernet Mid-Thigh Girdle	XS-XXXL	4-8011
Satin Mid-Thigh Girdle	XS-XXXL	4-8511
Powernet Ankle Length Girdle	SPECIAL	4-8013
Satin Ankle Length Girdle	SPECIAL	4-8513
Abdomino/Lipoplasty Combination Girdle, Capri Length	XS-XXL	4-8200
Abdomino/Lipoplasty Combination Girdle, Above-the-Knee	XS-XXL	4-8212
Abdomino/Lipoplasty Combination Girdle, Ankle-Length	SPECIAL	4-8213
Powernet Capri Length Suspended Girdle	XS-XXL	4-4000
Satin Capri Length Suspended Girdle	XS-XXL	4-4500
Powernet Above-the-Knee Suspended Girdle	XS-XXL	4-4012
Satin Above-the-Knee Suspended Girdle	XS-XXL	4-4512
Powernet Mid-Thigh Suspended Girdle	XS-XXL	4-4011
Satin Mid-Thigh Suspended Girdle	XS-XXL	4-4511
Powernet Ankle Length Suspended Girdle	SPECIAL	4-4013
Satin Ankle Length Suspended Girdle	SPECIAL	4-4513
Capri Breast/Lipo Bodysuit	XS-XXL	4-8550
Above-the-Knee Breast/Lipo Bodysuit	XS-XXL	4-8552

SIZING CHART GIRDLES

Size	Inches		Centimeters	
	Hip	Waist	Hip	Waist
XS	33 - 34	23 - 24	83.8 - 86.4	58.4 - 61.0
S	35 - 36	25 - 26	88.9 - 91.4	63.5 - 66.0
M	37 - 38	27 - 28	94.0 - 96.5	68.6 - 71.1
L	40 - 43	30 - 33	101.6 - 109.2	76.2 - 83.8
XL	44 - 46	34 - 36	111.8 - 116.8	86.4 - 91.4
XXL	48 - 50	38 - 40	121.9 - 127.0	96.5 - 101.6
XXXL	52 - 54	42 - 44	132.0 - 137.0	107.0 - 112.0

custom sizing available

Compression Garments CONT'D

Male Garments

Description	Size	Catalog #
Compression Vest	XS-XXL	2-8003
Abdominoplasty Garment, Without Zippers	XS-XXL	3-9000
Abdominoplasty Garment	XS-XXL	3-9005
Above-the-Knee Girdle	XS-XXL	4-8112
Below-the-Knee Girdle	XS-XXL	4-8100
Ankle-Length Girdle	SPECIAL	4-8113

SIZING CHART MALE COMPRESSION VEST

Size	Inches		Centimeters	
	Chest	Waist	Chest	Waist
XS	30 - 32	34	76.2 - 81.3	86.4
S	34 - 36	36	86.4 - 91.4	91.4
M	38 - 40	38	96.5 - 101.6	96.5
L	42 - 44	40	106.7 - 111.8	101.6
XL	46 - 48	42	116.8 - 121.9	106.7
XXL	50 - 52	44	127.0 - 132.1	111.8

custom sizing available

SIZING CHART MALE AB/GIRDLES

Size	WAIST	
	Inches	Centimeters
XS	26 - 27	66.0 - 68.6
S	28 - 30	71.1 - 76.2
M	32 - 34	81.3 - 86.4
L	36 - 38	91.4 - 96.5
XL	40 - 42	101.6 - 106.7
XXL	44 - 46	111.8 - 116.8

custom sizing available

Head and Neck

Description	Size	Catalog #
Chin-Neck Bandage	XS-XL	1-8006
Ear Bandage	XXS-XL	1-8011
Face Lift Bandage	XS-XL	1-8026
Full Face Bandage	XS-XL	1-8007
Therma Jaw Bandage with Gel Pack	XS-XL	1-8018
Therma Jaw Bandage without Gel Pack	XS-XL	1-8019
Two Gel Packs (bandage not included)	XS-XL	1-8017

SIZING CHART HEAD AND NECK

Size	Inches		Centimeters	
	Neck	Head	Neck	Head
XXS	12	16	30.5	40.6
XS	13	18	33.0	45.7
S	14	20	35.6	50.8
M	15	22	38.1	55.9
L	16	24	40.6	61.0
XL	17	26	43.2	66.0

custom and pediatric sizing available

Important Safety Information

MemoryGel® and Mentor saline-filled breast implants are indicated for breast augmentation in women (at least 18 years old) or for breast reconstruction. Breast implant surgery should not be performed in women with active infection anywhere in their body, with existing cancer or pre-cancer of their breast who have not received adequate treatment for those conditions, or are pregnant or nursing.

Breast implants are not lifetime devices and breast implantation is not necessarily a one-time surgery. The most common complications with the MemoryGel® breast implants include reoperation, capsular contracture, asymmetry, and breast pain. A lower risk of complication is rupture. The health consequences of a ruptured silicone gel-filled breast implant have not been fully established. Screenings such as mammography, MRI, or ultrasound are recommended after initial implant surgery to assist in detecting implant rupture.

The most common complications with Mentor saline-filled breast implants include reoperation, implant removal, capsular contracture, wrinkling, breast pain and deflation.

Your patient needs to be informed and understand the risks and benefits of breast implants, and provided with an opportunity to consult with you prior to deciding on surgery.

Contour Profile® Tissue Expanders and Smooth Round Tissue Expanders with Remote Dome are used for breast reconstruction following mastectomy. These expanders are intended for temporary subcutaneous or submuscular implantation and are not intended for use beyond six months. Do not use the Contour Profile® Tissue Expander and Smooth Tissue Expander with Remote Dome in patients where an MRI may be needed. The device could be moved by the MRI causing pain or displacement, potentially resulting in a revision surgery. The incidence of extrusion of the expander has been shown to increase when the expander has been placed in injured areas.

For detailed indications, contraindications, warning and precautions associated with the use of all Mentor implantable devices, which include Mentor saline-filled breast implants, MemoryGel® breast implants and Tissue Expanders, please refer to the Product Insert Data Sheet provided with each product, or review the Important Safety Information provided at www.mentorcorp.com.



MENTOR[®]

MAKE LIFE MORE *beautiful*[™]

MemoryGel[®]
Breast Implants



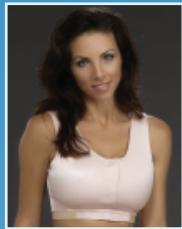
Saline
Breast Implants



*Tissue
Expanders*



body aesthetics
by  MENTOR[®]



 CAROMED[®]
Compression Garments

CORPORATE HEADQUARTERS

Santa Barbara, CA 93111 USA

Tel: +1 805 879 6000

www.mentorcorp.com

INTERNATIONAL OPERATIONS

Mentor Medical Systems, Australia, Pty. Ltd.

Tel: +61 2 9251 8111

Toll Free: +1 800 338 160

Fax: +61 2 9251 8333

Mentor Medical Systems, Canada, Inc.

Tel: +1 905 725 7763

Toll Free: +1 800 668 6069

Fax: +1 905 725 7340

Mentor Deutschland GmbH

Tel: +49 811 600 50 0

Fax: +49 811 600 50 11

Mentor Medical Systems Iberica, S.L.

Tel: +34 91 562 2700

Fax: +34 91 728 3367

Mentor Medical Italia, S.r.l.

Tel: +39 0 2 880 7761

Fax: +39 0 2 7209 3710

Mentor Medical Systems Ltd., U.K.

Tel: +44 1635 511800

Fax: +44 1635 511810

Perouse Plastie, S.A.S., France

Tel: +33 3 44 08 26 26

Fax: +33 3 44 08 26 01

Local Address Here



© April 2010 Mentor 0112016 Rev L

NOT FOR DISTRIBUTION IN USA